

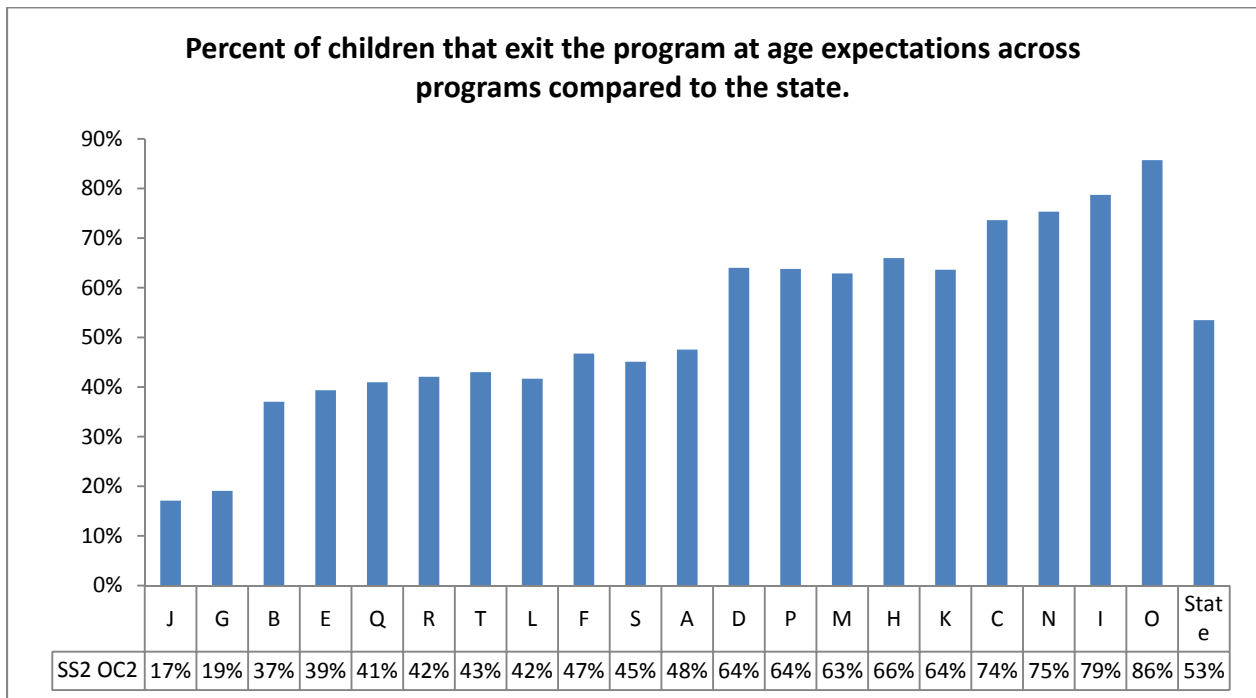
## Data Workshop Activity 1: Reviewing Summary Statement Data from Local programs

Hypothesis checking- Are the data sufficient quality?

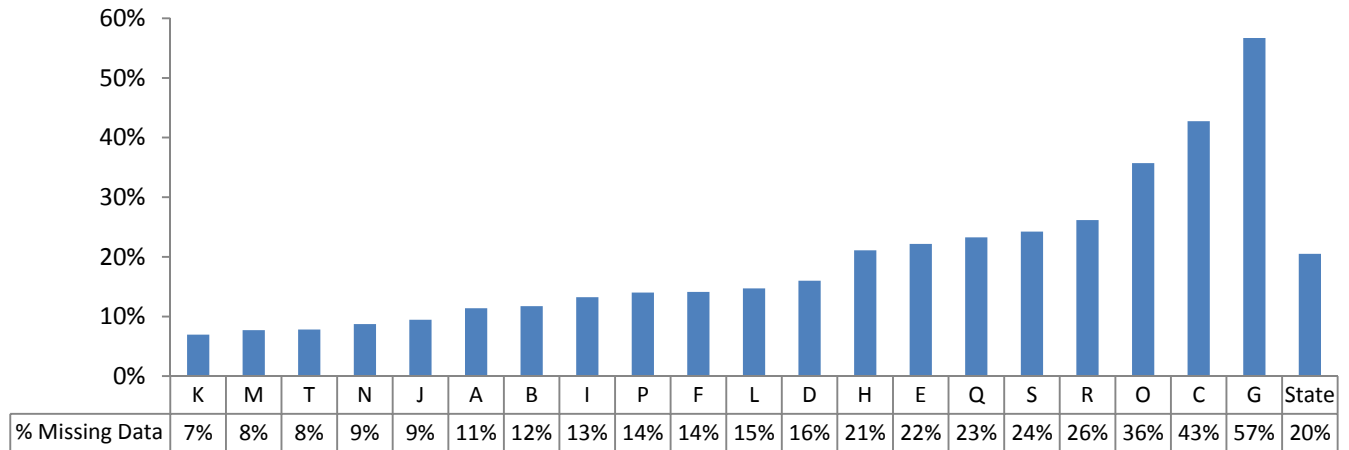
For this activity we will review the data for the number of children that exit the program functioning like same age peer in acquisition of knowledge and skills. First review the patterns across programs. Then we will dig deeper and look at the percent of missing data by program and the percent of children in category 'a' by program. Please refer to your handout to refresh your understanding of the summary statements and progress categories.

Table Discussion Questions:

- \* What did you notice about the local data?
- \* Which programs have a possible “red flag”?
- \* What kinds of inferences did you make about the quality of the data from the programs?
- \* What next steps might you take? Are there programs that don't have good data? Are there programs that should be removed?



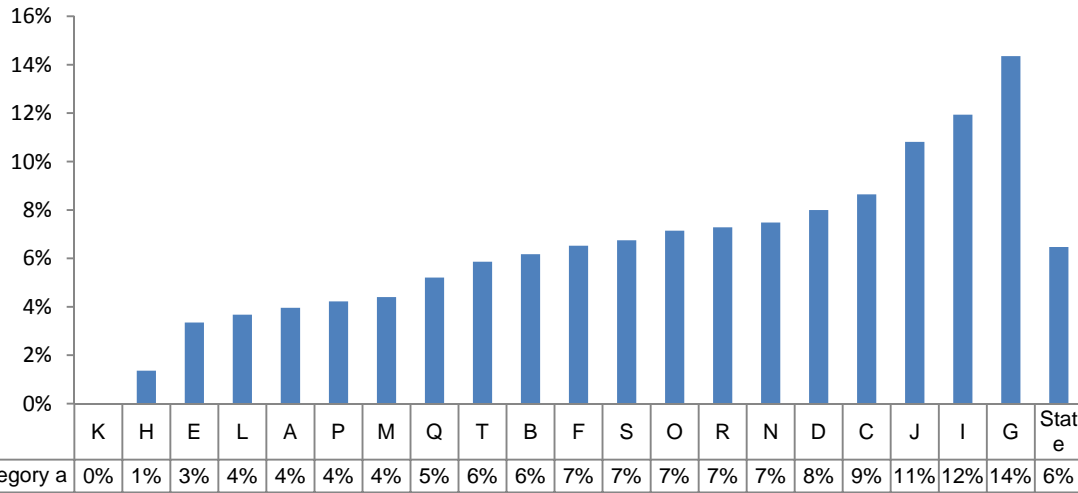
Percent of children exiting the program with incomplete or missing child outcomes data



Program #	Number expected*	Number of Children with Complete Outcomes Data	Percent with Incomplete or Missing Child Outcomes Data
A	202	179	11.4%
B	162	143	11.7%
C	648	371	42.7%
D	50	42	16.0%
E	239	186	22.2%
F	92	79	14.1%
G	404	175	56.7%
H	147	116	21.1%
I	310	269	13.2%
J	222	201	9.5%
K	316	294	7.0%
L	408	348	14.7%
M	636	587	7.7%
N	401	366	8.7%
O	56	36	35.7%
P	450	387	14.0%
Q	288	221	23.3%
R	302	223	26.2%
S	326	247	24.2%
T	307	283	7.8%
State	5966	4753	20.3%

\* children exiting 7/1/12-6/30/13 with IEPs (expected number of children with data)

**Percent of children that did not acquire any knowledge and skills during their time in the program**





## Activity 2

# NO PEEKING!



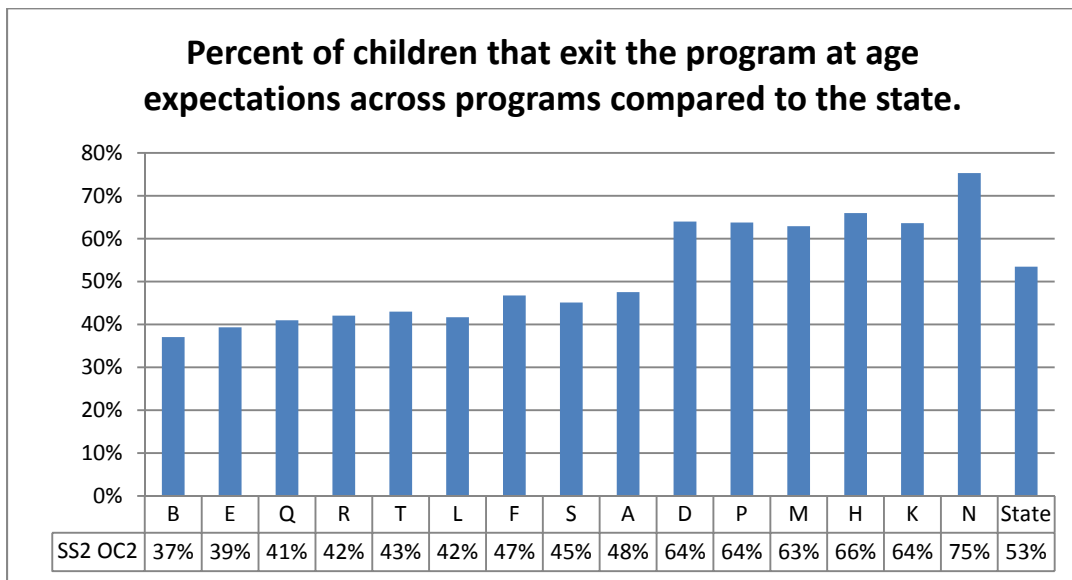
## Data Workshop Activity 2: Pattern Checking to Check the Validity of the Data – Can the real child outcomes please stand up?

Hypothesis checking- Are the data accurate? Do they meet expected patterns?

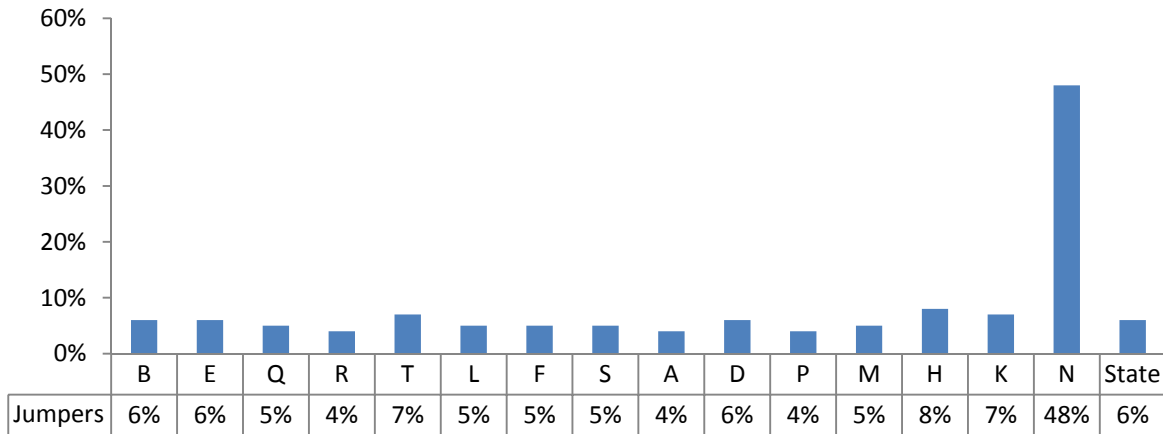
For this activity we will review the distribution of the summary statement data and look at the percent of children that make greater than expected change in the summary statements across time.

Table Discussion Questions:

- \* What did you notice about the local data?
- \* Which programs have a possible 'red flag'?
- \* What kinds of inferences did you make about the quality of the data from the programs?
- \* What next steps might you take? Are there programs that don't have good data? Are there programs that should be removed?



**Percent of children that increase by 4 or more COS rating points between entry and exit**



**Program F**

**Outcome 2:**

Crosstab showing numbers of children by rating at entry and exit

Entry	Exit							Grand Total
	1	2	3	4	5	6	7	
1	1	0	0	1	0	0	0	2
2	0	0	0	2	0	1	1	4
3	0	1	0	1	2	1	1	6
4	0	0	0	3	4	3	2	12
5	0	0	1	0	5	6	4	16
6	0	0	0	0	1	5	5	11
7	0	0	0	0	0	0	0	0
Grand Total	1	1	1	7	12	16	13	51

**Program N**

**Outcome 2:**

Crosstab showing numbers of children by rating at entry and exit

Entry	Exit							Grand Total
	1	2	3	4	5	6	7	
1	1	0	0	1	0	4	1	7
2	0	0	0	2	0	38	33	73
3	0	1	0	1	2	15	37	56
4	0	0	0	3	4	3	20	30
5	0	0	1	0	5	6	4	16
6	0	0	0	0	1	5	5	11
7	0	0	0	0	0	0	0	0
Grand Total	1	1	1	7	12	71	100	193





# Activity 3

## Still No Peeking!



## Data Workshop Activity 3: Drilling into child outcomes

Hypothesis checking- What program or child level variables lead to better child outcomes?

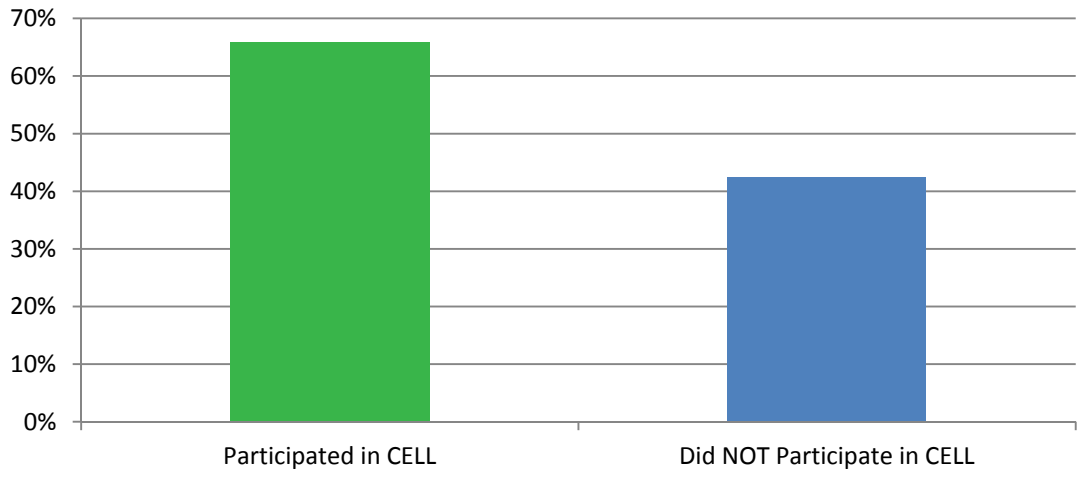
Before we get started, discuss in you small groups what some of your expectations about these relationships would be

- \* How would the percent of children exiting at age expectations in knowledge and skills be related to participation in a language and literacy initiative?
- \* What other child, family or program level variables would be important to consider when interpreting the child outcomes associated with participation in the initiative?

Table Discussion Questions:

- \* What next steps might you take?
- \* What other questions would you like to ask?

**State level comparison of the percent of children that exited programs functioning at age expectations in the aquisition of knowledge and skills by the programs participation in the CELL iniative**



**Comparison of the percent of children that exited at age expectations in their aquisition of knowledge and skills across programs based on their participation in CELL**

