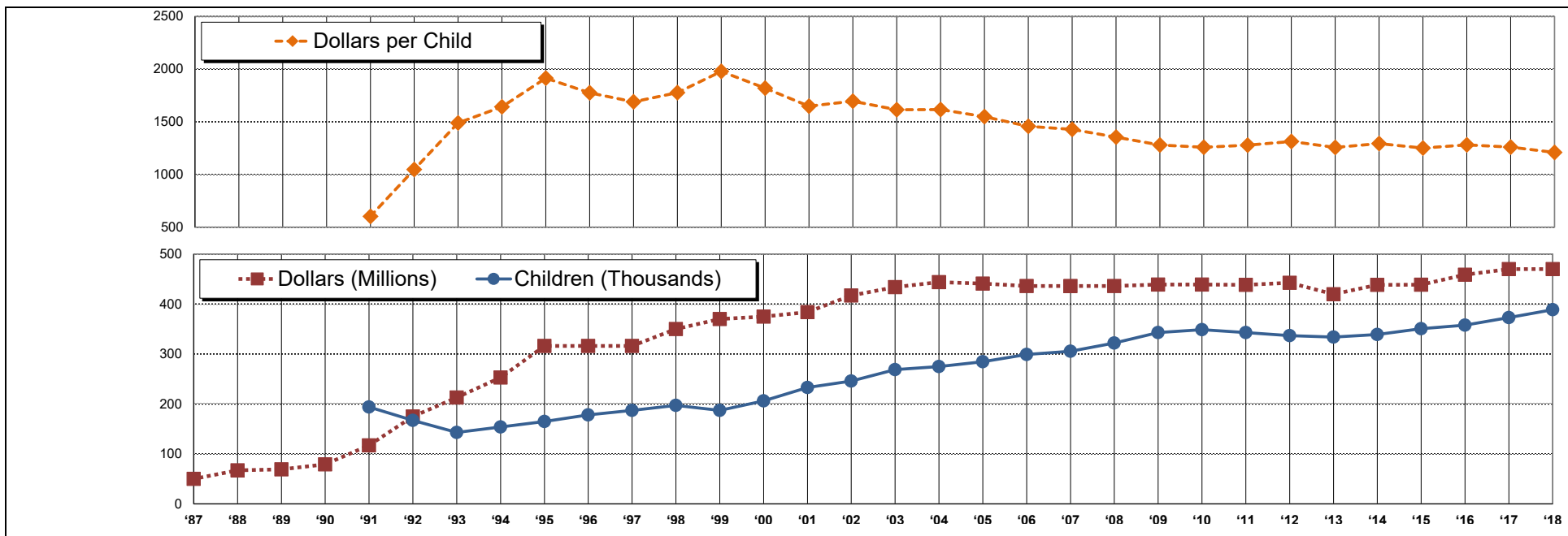


Part C Infant and Toddler Program

Federal Appropriations and National Child Count 1987-2018

updated May 20, 2019

| FFY: | '87 | '88 | '89 | '90 | '91 | '92 | '93 | '94 | '95 | '96 | '97 | '98 | '99 | '00 | '01 | '02 | '03 | '04 | '05 | '06 | '07 | '08 | '09 | '10 | '11 | '12 | '13 | '14 | '15 | '16 | '17 | '18 |
|----------------------|-----|-----|-----|-----|-----|------|------|------|------|------|------|------|------|------|------|------|------|------|------|------|------|------|------|------|------|------|------|------|------|------|------|------|
| Dollars (Millions) | 50 | 67 | 69 | 79 | 117 | 175 | 213 | 253 | 316 | 316 | 316 | 350 | 370 | 375 | 384 | 417 | 434 | 444 | 441 | 436 | 436 | 436 | 439 | 439 | 439 | 443 | 420 | 438 | 439 | 459 | 470 | 470 |
| Children (Thousands) | | | | | 194 | 167 | 143 | 154 | 165 | 178 | 187 | 197 | 187 | 206 | 233 | 246 | 269 | 275 | 285 | 299 | 305 | 322 | 343 | 349 | 343 | 337 | 334 | 339 | 351 | 358 | 373 | 389 |
| Dollars per Child | | | | | 603 | 1048 | 1490 | 1643 | 1915 | 1775 | 1690 | 1777 | 1979 | 1820 | 1648 | 1697 | 1615 | 1616 | 1550 | 1458 | 1428 | 1354 | 1280 | 1259 | 1279 | 1314 | 1257 | 1293 | 1251 | 1282 | 1260 | 1209 |



Key

Dollars (Millions) appropriated for distribution to states:
Source: <http://www2.ed.gov/about/overview/budget/tables.html> (Downloaded May 20, 2019)

Children (Thousands) with Individualized Family Service Plans (IFSPs) in the Fall of each federal fiscal year, U.S. & Outlying Areas:
Source: <https://www2.ed.gov/programs/osepidea/618-data/static-tables/index.html> (Downloaded May 20, 2019)
Note: A single-day child count is used, which may underrepresent the actual number of children served that year.

Dollars per Child: allocation of Part C dollars

FFY (Federal Fiscal Year): For example, in FFY 1991, 194,000 children were reported to be receiving services as of December 1, 1990.



Office of Special Education Programs
U.S. Department of Education

Compiled by Lazara, A. Chapel Hill: The University of North Carolina, FPG Child Development Institute, Early Childhood Technical Assistance Center. Retrieved from <http://ectacenter.org/partc/partodata.asp>

The ECTA Center is a program of the FPG Child Development Institute of the University of North Carolina at Chapel Hill, funded through cooperative agreement number H326P170001 from the Office of Special Education Programs, U.S. Department of Education. Opinions expressed herein do not necessarily represent the Department of Education's position or policy.