

Part C



Updates

Seventh in a Series of Updates on Selected Aspects of the
Early Intervention Program for Infants and Toddlers with Disabilities,
Part C of the Individuals with Disabilities Education Act (IDEA)

Joan Danaher
Caroline Armijo

The National Early Childhood Technical Assistance Center (NECTAC)

is a program of the

FPG Child Development Institute
of
The University of North Carolina at Chapel Hill

with the

Parent Advocacy Coalition for Educational Rights (PACER) Center

May 2005

ISBN: 1-932227-24-5

This resource is produced and distributed by the National Early Childhood Technical Assistance Center, pursuant to contract ED-01-CO-0112 from the Office of Special Education Programs, U.S. Department of Education (ED). Contractors undertaking projects under government sponsorship are encouraged to express their judgment in professional and technical matters. Opinions expressed do not necessarily represent the Department of Education's position or policy.

NECTAC is committed to making the information it disseminates fully accessible to all individuals. If you require any of this information in an alternate format, please contact us at the address below. Additional copies of this document are available at cost from NECTAC. A complete list of NECTAC resources is available at our Web site or upon request.

Please cite as:

Danaher, J. & Armijo, C. (Eds.). (2005). Part C updates (7th ed.). Chapel Hill: The University of North Carolina, FPG Child Development Institute, National Early Childhood Technical Assistance Center.

For more information about NECTAC, please contact us at:

Campus Box 8040, UNC-CH
Chapel Hill, NC 27599-8040

919-962-2001 ★ phone

919-843-3269 ★ TDD

919-966-7463 ★ fax

nectac@unc.edu ★ www.nectac.org

Principal Investigator: *Pascal Trobanis*

Contracting Officer's Representative at OSEP: *Peggy Cwach*

Contract Specialist at U.S. ED: *Stephan Lewis*



Contents

Introduction.....	v
Table of State Abbreviations.....	vii
Section I: Part C Program Administration.....	1
Minimum Components Under IDEA of a Statewide Comprehensive System of Early Intervention Services to Infants and Toddlers with Special Needs.....	3
Annual Part C Appropriations and Children Served.....	5
Part C Allocations to State and Jurisdictional Lead Agencies.....	6
Part C Funding Cycles.....	9
U.S. Department of Education Organization Chart.....	11
OSEP Part C Project Officers.....	13
State and Jurisdictional Part C Lead Agencies.....	15
Part C Coordinators and Infant/Toddler Program Contacts in States and Jurisdictions.....	17
Chairs of State Interagency Coordinating Councils.....	25
Contact List of State ICC Staff.....	31
Section II: Part C Program Implementation Resources.....	33
States' Part C Rules, Regulations and Policies: On-line resources.....	35
State and Jurisdictional Eligibility Definitions for Infants and Toddlers with Disabilities Under IDEA by Jo Shackelford (<i>NECTAC Notes</i> No. 18, March 2005).....	37
Survey of Part C Coordinators and Assistive Technology by Campbell, P., Milbourne, S. and Wilcox, M. (Research Brief Volume 1, Number 4. <i>Tots n Tech</i> Research Institute.).....	53
Section III: Part C Data.....	59
Child Count	
Number (Based on 2003 Population Estimates) of Infants and Toddlers Receiving Early Intervention Services, December 1, 2003.....	62
www.ideadata.org/tables27th%5Car_ah1.htm	
Number of At-Risk Infants and Toddlers Receiving Early Intervention Services, by Age and State (Duplicated Count), December 1, 2003.....	63
www.ideadata.org/tables27th%5Car_ah2.htm	
Number and Percentage (Based on 2002 Population Estimates) of Infants and Toddlers Receiving Early Intervention Services, December 1, 2002.....	64
www.ideadata.org/docs/2002PopbyAge.html	
Racial/Ethnic Composition (Number and Percentage) of Infants and Toddlers Ages Birth Through 2 Served Under IDEA, Part C by Race/Ethnicity, December 1, 2003.....	66
www.ideadata.org/tables27th%5Car_ah7.htm	
Racial/Ethnic Composition (Number and Percentage) of At-Risk Infants and Toddlers Ages Birth Through 2, Served Under IDEA, Part C by Race/Ethnicity, December 1, 2003.....	68
www.ideadata.org/tables27th%5Car_ah8.htm	

Trend Data - Child Count

IDEA, Part C Child Count and Percentage of Population Served, by Age and by Race/Ethnicity (U.S. and Outlying Areas) 1997 Through 2002.....	69
www.ideadata.org/docs/PartCDataMeetingProfiles2004/U.S.%20AND%20OUTLYING%20AREAS.HTM	
Number of Infants and Toddlers Served Under IDEA, Part C, Ages 0-2 by State, 1994 Through 2002.....	70
www.ideadata.org/docs/PartCTrendData/C1.html	
Number of Infants and Toddlers Served in the 50 States and D.C. Under IDEA, Part C, Ages 0-2 by Age, 1994 Through 2002	71
www.ideadata.org/docs/PartCTrendData/C2.html	
Number of Infants and Toddlers Served in the 50 States and D.C. Under IDEA, Part C, Ages 0-2 by Race/Ethnicity, 1998 Through 2002	71
www.ideadata.org/docs/PartCTrendData/C3.html	

Settings

Primary Early Intervention Settings for Infants and Toddlers, Ages Birth Through 2, Served Under IDEA, Part C 1997 Through 2001 (U.S. and Outlying Areas)	72
www.ideadata.org/docs/PartCDataMeetingProfiles2004/U.S.%20AND%20OUTLYING%20AREAS.HTM	
Primary Early Intervention Settings for Infants and Toddlers, Ages Birth Through 2, Served Under IDEA, Part C, by Race/Ethnicity, 2001 (U.S. and Outlying Areas)	73
www.ideadata.org/docs/PartCDataMeetingProfiles2004/U.S.%20AND%20OUTLYING%20AREAS.HTM	
Number of Infants and Toddlers Ages Birth Through 2 Served in Different Early Intervention Settings Under Part C, December 1, 2002	74
www.ideadata.org/tables27th%5Car_ah3.htm	
Number and Percentage of Infants and Toddlers and Their Families Served in Different Part C Program Settings, by Race/Ethnicity, December 1, 2002.....	76
www.ideadata.org/tables27th%5Car_ah10.htm	

Trend Data - Settings

Number and Percentage of Infants and Toddlers Served in the 50 States and D.C. Under IDEA, Part C, Ages 0-2 by Setting, 1995 Through 2001	86
www.ideadata.org/docs/PartCTrendData/C4A.html	
Number and Percentage of Infants and Toddlers Served in the 50 States and D.C. Under IDEA, Part C, Ages 0-2 by Setting and Race/Ethnicity, 1998 Through 2001	87
www.ideadata.org/docs/PartCTrendData/C4B.html	

Exiting

Number and Percentage of Infants and Toddlers Ages Birth Through 2 Exiting Part C Programs, by Race/Ethnicity and Basis of Exit During 2002-03	88
www.ideadata.org/tables27th%5Car_ah11.htm	
Number of Infants and Toddlers Ages Birth Through 2 Exiting Part C Programs, During the 2002-2003 Reporting Year.....	98
www.ideadata.org/tables27th%5Car_ah4.htm	

Trend Data - Exiting

Infants and Toddlers Exiting Part C, by Reason for Exit, 1998 Through 2001 (U.S. and Outlying Areas)	99
www.ideadata.org/docs/PartCDataMeetingProfiles2004/U.S.%20AND%20OUTLYING%20AREAS.HTM	
Number and Percentage of Infants and Toddlers Served in the 50 States and D.C. Under IDEA, Part C, Ages 0-2 by Race/Ethnicity and Reason for Exit, 1998-1999 Through 2001-2002.....	101
www.ideadata.org/docs/PartCTrendData/C5.html	

Services

Early Intervention Services on IFSPs Provided to Infants, Toddlers,
and Their Families in Accord With Part C, December 1, 2002 102
www.ideadata.org/tables27th%5Car_ah5.htm

Number and Percentage of Infants and Toddlers Ages Birth Through 2 by Early
Intervention Services Provided by Race/Ethnicity, December 1, 2002 104
www.ideadata.org/tables27th%5Car_ah12.htm

Trend Data - Services

Number of Early Intervention Services on IFSP of Infants and Toddlers Ages 0-2
Served in the 50 States and D.C. Under IDEA, Part C by Race/Ethnicity,
1998 Through 2001 124
www.ideadata.org/docs/PartCTrendData/C6B.html

Percentage of Early Intervention Services on IFSP of Infants and Toddlers Ages 0-2
Served in the 50 States and D.C. Under IDEA, Part C by Race/Ethnicity,
1998 Through 2001 125
www.ideadata.org/docs/PartCTrendData/C6B.html

Number and Percentage of Early Intervention Services on IFSPs
of Infants and Toddlers Ages 0-2 Served in the 50 States and D.C.
Under IDEA, Part C, 1994 Through 2001 127
www.ideadata.org/docs/PartCTrendData/C6A.html

Personnel

Number and Type of Personnel Employed and Contracted to
Provide Early Intervention Services to Infants and Toddlers
with Disabilities and Their Families, December 1, 2002 128
www.ideadata.org/tables27th%5Car_ah6.htm

Appendix A: Federal Statute A-1

Part C of Public Law 108-446, the Individuals with Disabilities Education
Improvement Act of 2004 A-3

Introduction

Part C Updates is a compilation of information on various aspects of the Early Intervention Program for Infants and Toddlers with Disabilities (Part C) of the Individuals with Disabilities Education Act (IDEA). It is the seventh volume in a series of compilations, which included two editions of Part H Updates, the former name of the program. Several items have been reprinted in their entirety from the original sources. The intent of *Part C Updates* is to collect, in a convenient format, a variety of resources that meet the information needs of state and jurisdictional Part C program staff, the Office of Special Education Programs of the U.S. Department of Education, and policy makers at all levels.

We welcome your feedback on the usefulness of the *Part C Updates*. States and jurisdictions are particularly invited to provide updated information to the editors or to the authors of individual documents.

Joan Danaher
Caroline Armijo

Key to State and Jurisdictional Abbreviations

(Listed alphabetically by abbreviation)

	State/Jurisdiction		State/Jurisdiction
AL	Alabama	MS	Mississippi
AK	Alaska	MT	Montana
AR	Arkansas	NC	North Carolina
AS	American Samoa	ND	North Dakota
AZ	Arizona	NE	Nebraska
BIA	Bureau of Indian Affairs, Department of the Interior	NV	Nevada
CA	California	NH	New Hampshire
CO	Colorado	NJ	New Jersey
CT	Connecticut	NM	New Mexico
DC	District of Columbia	NY	New York
DE	Delaware	OH	Ohio
FL	Florida	OK	Oklahoma
GA	Georgia	OR	Oregon
GU	Guam	PA	Pennsylvania
HI	Hawai'i	PR	Puerto Rico
IA	Iowa	RI	Rhode Island
ID	Idaho	SC	South Carolina
IL	Illinois	SD	South Dakota
IN	Indiana	TN	Tennessee
KS	Kansas	TX	Texas
KY	Kentucky	UT	Utah
LA	Louisiana	VA	Virginia
MA	Massachusetts	VI	Virgin Islands
MD	Maryland	VT	Vermont
ME	Maine	WA	Washington
MI	Michigan	WI	Wisconsin
MN	Minnesota	WV	West Virginia
MO	Missouri	WY	Wyoming
MP	Northern Mariana Islands		

Note: The Pacific jurisdictions of the Federated States of Micronesia, the Republic of the Marshall Islands, and the Republic of Palau are not currently eligible to participate in Part C.

Section I:

Part C Program Administration

Minimum Components Under IDEA of a Statewide Comprehensive System of Early Intervention Services to Infants and Toddlers with Special Needs.....	3
Annual Part C Appropriations and Children Served	5
Part C Allocations to State and Jurisdictional Lead Agencies	6
Part C Funding Cycles.....	9
U.S. Department of Education Organization Chart.....	11
OSEP Part C Project Officers	13
State and Jurisdictional Part C Lead Agencies	15
Part C Coordinators and Infant/Toddler Program Contacts in States and Jurisdictions	17
Chairs of State Interagency Coordinating Councils.....	25
Contact List of State ICC Staff	31

**Minimum Components Under IDEA of a Statewide,
Comprehensive System of Early Intervention Services to
Infants and Toddlers With Special Needs**
(Including American Indian and Homeless Infants and Toddlers)

1. A rigorous definition of the term 'developmental delay'
2. Appropriate early intervention services based on scientifically based research, to the extent practicable, are available to all infants and toddlers with disabilities and their families, including Indian and homeless infants and toddlers
3. Timely and comprehensive multidisciplinary evaluation of needs of children and family-directed identification of the needs of each family
4. Individualized family service plan and service coordination
5. Comprehensive child find and referral system
6. Public awareness program including the preparation and dissemination of information to be given to parents, and disseminating such information to parents
7. Central directory of services, resources, and research and demonstration projects
8. Comprehensive system of personnel development, including the training of paraprofessionals and the training of primary referral sources
9. Policies and procedures to ensure that personnel are appropriately and adequately prepared and trained
10. Single line of authority in a lead agency designated or established by the governor for carrying out:
 - a. General administration and supervision
 - b. Identification and coordination of all available resources
 - c. Assignment of financial responsibility to the appropriate agencies
 - d. Development of procedures to ensure that services are provided in a timely manner pending resolution of any disputes
 - e. Resolution of intra- and interagency disputes
 - f. Development of formal interagency agreements
11. Policy pertaining to contracting or otherwise arranging for services
12. Procedure for securing timely reimbursement of funds
13. Procedural safeguards
14. System for compiling data on the early intervention system
15. State interagency coordinating council
16. Policies and procedures to ensure that to the maximum extent appropriate, early intervention services are provided in natural environments except when early intervention cannot be achieved satisfactorily in a natural environment

Note: Adapted from 20 U.S.C. §1435(a).

Annual Appropriations and Number of Children Served Under Part C of IDEA

Federal Fiscal Years 1987-2005

FFY	Appropriations (Million \$)	Children ¹
1987	50	
1988	67	
1989	69	
1990	79	
1991	117	194,363 (1.77%)
1992	175	166,634 ² (1.41%)
1993	213	143,392 ² (1.18%)
1994	253	154,065 (1.30%)
1995	316 ³	165,253 (1.41%)
1996	316	177,734 (1.54%)
1997	316	187,348 (1.65%)
1998	350	197,376 (1.70%)
1999	370	188,926 (1.63%)
2000	375	205,769 (1.78%)
2001	383.6	230,853 (1.99%)
2002	417	247,433 (2.14%)
2003	434	268,331 ⁴ (2.24%)
2004	444	272,454 ⁴ (2.24%)
2005	441 ⁵	n/a

¹ Number and percentage of infants and toddlers receiving early intervention services under Part C, Chapter 1 (for FY 1987 through FY 1994 only), and other programs as of December 1 of the Federal fiscal year. For example, for fiscal year 1991, 194,000 children were reported to be receiving services as of December 1, 1990.

² A combination of factors appears to account for the apparent decline in these child counts:

- Early inaccuracies, including duplicated counts in state data collection systems;
- Inclusion in earlier years of children received some services but did not necessarily have IFSPs; and
- In the count for 1993, the decline in the reported number of children served in several large states masked the reports from other jurisdictions of increases in the number of children served.

³ Includes \$34 million to offset the elimination of funding for the Chapter 1 Handicapped Program.

⁴ Sources: www.ideadata.org, updated as of July 31, 2004 (downloaded March 31, 2005).

⁵ FY 2005 was level funded from 2004 but there was a .80% recession.

Part C Allocation to State and Jurisdictional Lead Agencies

Federal Fiscal Years 1994 Through 2004

State	FFY94	FFY95	FFY96	FFY97	FFY98	FFY99	FY00	FY01	FY02	FY03	FY04
AL	\$3,887,000	\$4,367,917	\$4,483,470	\$4,451,153	\$5,026,654	\$5,401,820	\$5,442,925	\$5,567,271	6,063,339	6,313,728	6,355,108
AK	1,524,000	1,524,910	1,545,710	1,545,925	1,713,659	1,812,075	1,836,562	1,878,520	2,043,288	2,127,667	2,177,738
AS	475,000	514,726	514,925	514,925	570,537	581,948	589,812	603,278	616,106	603,278	603,278
AZ	4,242,000	5,040,920	5,306,409	5,281,199	5,964,019	6,790,748	7,163,113	7,326,758	7,868,896	8,193,846	8,956,531
AR	2,429,000	2,511,863	2,549,297	2,643,862	2,985,693	3,224,319	3,300,402	3,375,801	3,716,598	3,870,077	3,869,854
CA	35,326,000	40,347,086	41,438,233	40,850,169	46,131,788	46,249,617	45,929,796	46,979,082	49,954,044	52,016,926	54,325,050
CO	3,568,000	3,893,981	3,972,753	4,069,358	4,595,495	5,125,020	5,377,332	5,500,179	6,132,874	6,386,135	6,870,176
CT	3,957,000	4,095,944	3,378,163	3,378,163	3,775,344	3,831,379	3,992,165	4,083,368	4,478,645	4,663,593	4,584,842
DE	1,255,000	1,374,985	1,545,710	1,545,710	1,713,659	1,812,075	1,836,562	1,878,520	2,043,288	2,127,667	2,177,738
DC	3,094,000	3,862,461	3,864,276	3,864,276	4,284,149	4,567,901	4,629,630	4,735,395	5,148,148	5,359,994	5,485,959
DC	1,383,000	1,383,883	1,545,710	1,545,710	1,713,659	1,812,075	1,836,562	1,878,520	2,043,288	2,127,667	2,177,738
FL	14,914,000	15,212,617	14,722,619	14,722,619	16,118,402	17,360,485	17,645,688	18,048,811	19,235,683	20,030,031	22,092,807
GA	6,564,000	7,438,660	8,226,009	8,342,876	9,421,547	10,497,445	10,918,523	11,167,692	12,265,577	12,772,091	14,093,249
GU	1,052,000	1,139,887	1,140,327	1,140,327	1,263,482	1,288,752	1,306,168	1,335,989	1,364,398	1,413,123	1,476,175
HI	1,557,000	1,590,820	1,569,551	1,569,551	1,713,659	1,812,075	1,836,562	1,878,520	2,043,288	2,127,667	2,177,738
ID	1,479,000	1,479,484	1,545,710	1,545,710	1,713,659	1,812,075	1,836,562	1,878,520	2,043,288	2,127,667	2,177,738
IL	13,193,000	13,736,885	13,785,909	13,792,826	15,576,135	16,098,291	16,151,859	16,520,855	17,822,071	18,558,044	18,959,949
IN	5,876,000	6,442,058	6,065,530	6,177,116	6,975,771	7,501,701	7,655,126	7,830,010	8,666,617	9,024,511	8,966,247
IA	2,582,000	2,809,586	2,712,211	2,728,821	3,081,637	3,315,411	3,369,461	3,446,438	3,851,252	4,010,292	3,778,931
KS	2,505,000	2,802,012	2,716,195	2,734,507	3,088,058	3,335,406	3,433,291	3,511,726	3,884,393	4,044,802	3,958,374
KY	3,478,000	3,928,148	3,876,538	3,889,895	4,392,829	4,795,769	4,812,022	4,921,954	5,461,452	5,686,986	5,374,664
LA	4,788,000	5,275,752	5,023,051	4,898,566	5,531,914	5,747,605	5,894,220	6,028,876	6,549,059	6,819,506	6,926,276
ME	1,237,000	1,374,985	1,545,710	1,545,710	1,713,659	1,812,075	1,836,562	1,878,520	2,043,288	2,127,667	2,177,738
MD	6,088,000	6,239,596	6,148,806	6,148,806	6,054,659	6,237,516	6,413,677	6,560,200	7,162,997	7,458,797	7,809,528
MA	8,492,000	8,492,708	8,621,533	8,621,533	7,826,512	8,115,297	7,269,022	7,435,086	8,078,494	8,412,100	8,197,318
MI	9,621,000	10,176,247	10,017,913	9,990,962	11,282,718	11,896,386	12,028,661	12,303,461	13,646,869	14,210,424	13,865,680
MN	4,836,000	5,094,610	4,873,116	4,873,116	5,345,043	5,792,064	5,931,008	6,066,505	6,710,076	6,987,172	6,599,601
MS	2,545,000	2,836,013	3,120,649	3,065,154	3,461,456	3,688,050	3,786,753	3,873,263	4,213,822	4,387,834	4,503,181
MO	5,167,000	5,724,039	5,422,619	5,465,155	6,171,758	6,630,914	6,722,152	6,875,722	7,568,706	7,881,260	7,722,227
MT	1,395,000	1,395,819	1,545,710	1,545,710	1,713,659	1,812,075	1,836,562	1,878,520	2,043,288	2,127,667	2,177,738
NE	1,612,000	1,758,114	1,689,626	1,719,997	1,942,380	2,098,289	2,120,927	2,169,380	2,400,219	2,499,338	2,500,332
NV	1,535,000	1,759,009	1,783,636	1,903,065	2,149,117	2,488,044	2,652,976	2,713,585	2,970,642	3,093,316	3,382,122
NH	1,522,000	1,522,232	1,545,710	1,545,710	1,713,659	1,812,075	1,836,562	1,878,520	2,043,288	2,127,667	2,177,738
NJ	8,119,000	8,552,266	8,497,315	8,527,086	9,629,574	9,865,491	9,965,995	10,193,673	11,405,544	11,876,542	11,912,070
NM	1,675,000	1,890,168	2,045,597	2,022,495	2,283,988	2,415,477	2,442,953	2,498,764	2,682,058	2,792,815	2,798,035
NY	19,445,000	21,361,108	20,119,188	19,656,530	22,197,971	22,590,621	22,320,520	22,830,440	25,063,710	26,098,730	26,175,777
NC	6,318,000	6,809,052	7,582,020	7,655,537	8,645,341	9,652,685	9,991,552	10,219,813	11,179,579	11,641,246	12,559,292
ND	1,299,000	1,374,985	1,545,710	1,545,710	1,713,659	1,812,075	1,836,562	1,878,520	2,043,288	2,127,667	2,177,738
MP	316,000	342,601	342,733	342,733	379,748	387,343	392,577	401,540	410,078	462,815	462,815
OH	9,708,000	10,460,369	11,402,583	11,364,015	12,833,297	13,495,119	13,648,077	13,959,873	15,361,800	15,996,175	16,188,519

State	FY94	FY95	FY96	FY97	FY98	FY99	FY00	FY01	FY02	FY03	FY04
OK	3,274,000	3,722,478	3,381,056	3,394,025	3,832,847	4,236,413	4,398,814	4,499,306	4,901,951	5,104,380	5,025,005
OR	3,034,000	3,142,903	3,086,097	3,203,673	3,617,884	3,969,749	4,068,712	4,161,663	4,544,414	4,732,078	4,724,970
PW	96,000	104,018	78,014	52,039	26,004	0	0	0	0	0	0
PA	12,590,000	12,590,173	12,702,122	12,702,122	12,737,869	12,889,526	13,016,152	13,313,512	14,662,818	15,268,327	14,877,778
PR	3,630,000	4,107,217	4,549,818	4,609,319	5,205,269	5,560,061	5,782,773	5,914,883	5,986,306	6,233,513	6,088,781
RI	1,564,000	1,564,797	1,568,805	1,568,805	1,713,659	1,812,075	1,836,562	1,878,520	2,043,288	2,127,667	2,177,738
SC	3,739,000	4,103,199	3,852,059	3,760,591	4,246,807	4,638,845	4,752,400	4,860,970	5,456,933	5,682,280	5,754,793
SD	1,328,000	1,374,985	1,545,710	1,545,710	1,713,659	1,812,075	1,836,562	1,878,520	2,043,288	2,127,667	2,177,738
TN	4,997,000	5,624,612	5,414,050	5,473,582	6,181,275	6,622,525	6,863,518	7,020,318	7,697,334	8,015,200	8,149,088
TX	21,774,000	24,258,785	23,718,333	24,061,384	27,172,340	29,847,674	30,671,586	31,372,291	33,464,547	34,846,484	36,640,184
UT	2,510,000	2,826,559	2,768,788	2,904,730	3,280,289	3,832,145	3,997,116	4,088,432	4,423,421	4,606,088	4,730,924
VT	1,362,000	1,374,985	1,545,710	1,545,710	1,713,659	1,812,075	1,836,562	1,878,520	2,043,288	2,127,667	2,177,738
VI	619,000	671,387	671,647	671,647	744,185	759,069	769,327	786,891	786,891	786,891	786,891
VA	6,635,000	7,329,204	6,930,714	6,814,652	7,695,736	8,150,863	8,373,127	8,564,414	9,470,434	9,861,521	10,384,417
WA	5,562,000	5,946,345	5,664,434	5,775,775	6,522,539	7,047,124	7,217,290	7,382,172	8,061,958	8,394,881	8,280,162
WV	1,783,000	1,878,151	1,798,698	1,798,698	1,799,482	1,812,075	1,836,562	1,878,520	2,068,052	2,153,453	2,177,738
WI	5,502,000	5,649,829	5,553,755	5,553,755	5,672,891	6,010,473	6,078,934	6,217,810	6,961,718	7,249,206	7,077,408
WY	1,423,000	1,423,267	1,545,710	1,545,710	1,713,659	1,812,075	1,836,562	1,878,520	2,043,288	2,127,667	2,177,738
	\$291,480,000	\$315,632,000	\$315,754,000	\$315,754,000	\$350,000,000	\$370,000,000	\$375,000,000	\$383,567,000	\$417,000,000	\$434,159,500	\$444,362,700

Source: Downloaded from http://www.ideadata.org/tables27th/ar_agl.xls, November 11, 2004.

Part C Funding Cycles

Federal Fiscal Year	Part C Funds First Available to States	Deadline for Submission of Application to OSEP	Deadline for Federal Obligation of Funds	Deadline for State Obligation of Funds
1987	7/01/87	6/30/88	9/30/88	9/30/89
1988	7/01/88	6/30/89	9/30/89	9/30/90
1989	7/01/89	6/30/90	9/30/90	9/30/91
1990	7/01/90	6/30/91	9/30/91	9/30/92
1991	7/01/91	6/30/92	9/30/92	9/30/93
1992	7/01/92	6/30/93	9/30/93	9/30/94
1993	7/01/93	EP to FI: 5/02/94 ¹ FI 1-3 yr: 1/31/94 ²	9/30/94	9/30/95
1994	7/01/94	1/31/95	9/30/95	9/30/96
1995	7/01/95	5/31/95	9/30/96	9/30/97
1996	7/01/96	8/01/96	9/30/97	9/30/98
1997	7/01/97	6/15/97	9/30/98	9/30/99
1998	7/01/98	5/01/98	9/30/99	9/30/00
1999	7/01/99	4/23/99	9/30/00	9/30/01
2000	7/01/00	4/27/00	9/30/01	9/30/02
2001	7/01/01	4/16/01	9/30/02	9/30/03
2002	7/01/02	5/31/02	9/30/03	9/30/04
2003	7/01/03	5/23/03	9/30/04	9/30/05
2004	7/01/04	4/16/04	9/30/05	9/30/06
2005	7/01/05	5/02/05	9/30/06	9/30/07

¹ From Extended Participation (EP) to Full Implementation (FI)

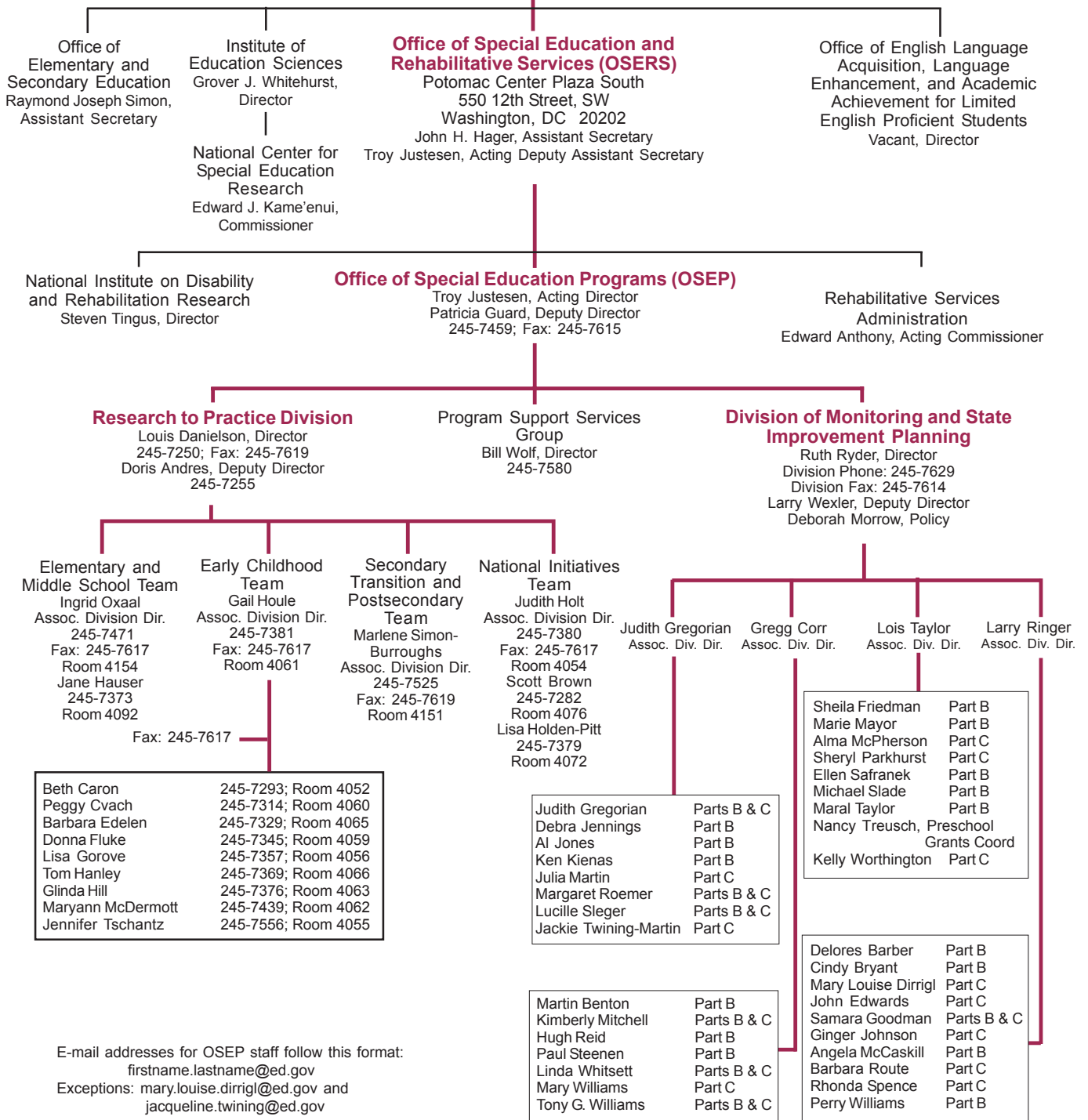
² For states in Full Implementation, 1- to 3-year application

U.S. Department of Education Organization Chart - Abbreviated

(As of June 13, 2005; All phone and fax numbers are in area code 202)

U.S. Department of Education

400 Maryland Avenue SW
Washington, DC 20202
Margaret Spellings, Secretary
Raymond Simon, Deputy Secretary



Prepared by the National Early Childhood Technical Assistance Center

OSEP Cross-Division Preschool Workgroup

Gregg Corr
Peggy Cvach
Mary Louise Dirrigl
Samara Goodman
Judith Gregorian
Lisa Holden-Pitt
Gail Houle
Julia Martin
Larry Ringer
Margaret Roemer
Ruth Ryder
Lois Taylor
Nancy Treusch (*Convener*)
Larry Wexler
Linda Whitsett
Kelly Worthington

OSEP Early Childhood Liaison Group

Peggy Cvach (*Contracting Officer's Representative/Convener*)
Mary Louise Dirrigl
Donna Fluke
Jane Hauser
Gail Houle
Julia Martin
Nancy Treusch

E-mail addresses for OSEP staff follow this format:
firstname.lastname@ed.gov
Exceptions: mary.louise.dirrigl@ed.gov and
jacqueline.twining@ed.gov

OSEP Part C Project Officers

State Assignments
Division Phone (202) 245-7629
Division Fax (202) 245-7614

Mary Louise Dirrigl
mary.louise.dirrigl@ed.gov

Georgia
Illinois
Louisiana

John Edwards
john.edwards@ed.gov

Alabama
Minnesota
Missouri
North Carolina

Samara Goodman
samara.goodman@ed.gov

Maine

Judith Gregorian
judith.gregorian@ed.gov

Guam

Ginger Johnson
ginger.johnson@ed.gov

Arkansas
New Mexico
Rhode Island
Texas
Vermont
West Virginia

Julia Martin
julia.martin@ed.gov

American Samoa
Arizona
Hawai'i
Michigan
Ohio
Tennessee

Alma McPherson
alma.mcpherson@ed.gov

Alaska
Florida
Maryland
New York
Utah

Kimberly Mitchell
kimberly.mitchell@ed.gov

Iowa

Sheryl Parkhurst
sheryl.parkhurst@ed.gov

Idaho
New Hampshire
New Jersey
Virgin Islands
Wyoming

Margaret Romer
margaret.romer@ed.gov

Connecticut

Barbara Route
barbara.route@ed.gov

Indiana
Virginia

Lucille Sleger
lucille.sleger@ed.gov

Commonwealth of Northern
Mariana Islands

Rhonda Spence
rhonda.spence@ed.gov

California
Mississippi
Wisconsin

Jacquelyn Twining-Martin
jacquelyn.twining@ed.gov

Colorado
Massachusetts
Montana
South Carolina
Washington

Linda Whitsett
linda.whitsett@ed.gov

Oregon
Puerto Rico

Mary Williams
mary.williams@ed.gov

District of Columbia
Kentucky
North Dakota
Pennsylvania
South Dakota

Tony G. Williams
tony.williams@ed.gov
Bureau of Indian Affairs

Kelly Worthington
kelly.worthington@ed.gov

Delaware
Kansas
Nebraska
Nevada
Oklahoma

Retrieved from <http://www.ed.gov/policy/speced/guid/idea/monitor/state-contact-list.html>, March 31, 2005.

NECTAC List of Part C Lead Agencies (Current as of May 2005)

State/Jurisdiction^{1,2}	Lead Agency/Lead Agency Subdivision
Alabama	Rehabilitation Services
Alaska	Health and Social Services
American Samoa	Health
Arizona	Economic Security
Arkansas	Human Services/Developmental Disabilities
California	Developmental Services
Colorado	Education
Commonwealth of Northern Mariana Islands	Education
Connecticut	Mental Retardation
Delaware	Health and Social Services
District of Columbia	Human Services
Florida	Health (Children's Medical Services)
Georgia	Human Resources/Division of Public Health
Guam	Education
Hawaii	Health
Idaho	Health & Welfare/Developmental Disabilities
Illinois	Human Services
Indiana	Family and Social Services
Iowa	Education
Kansas	Health and Environment
Kentucky	Health Services
Louisiana	Health and Hospitals
Maine	Education
Maryland	Education
Massachusetts	Public Health
Michigan	Education
Minnesota	Education
Mississippi	Health
Missouri	Education
Montana	Public Health and Human Services
Nebraska	Education and Health and Human Services (Co-Lead)
Nevada	Human Resources/Health
New Hampshire	Health and Human Services
New Jersey	Health and Senior Services
New Mexico	Health
New York	Health

¹ Federated States of Micronesia, Republic of Marshall Islands and Republic of Palau are not currently eligible for this federal program.

² The Department of the Interior (DOI) receives allocation from the U.S. Department of Education, which then is distributed by DOI to tribes.

North Carolina	Health and Human Services
North Dakota	Human Services
Ohio	Health
Oklahoma	Education
Oregon	Education
Pennsylvania	Public Welfare
Puerto Rico	Health
Rhode Island	Human Services
South Carolina	Health and Environmental Control
South Dakota	Education
Tennessee	Education
Texas	Assistive and Rehabilitative Services
Utah	Health
Vermont	Education and Human Services (Co-Lead)
Virgin Islands	Health
Virginia	Mental Health, Mental Retardation & Substance Abuse Services
Washington	Social and Health Services
West Virginia	Health and Human Resources
Wisconsin	Health and Family Services
Wyoming	Health

Part C Coordinators and Infant/Toddler Program Contacts in States and Jurisdictions

This information is maintained at the NECTAC Web site (www.nectac.org/contact/ptccoord.asp). Readers are encouraged to visit the site for up-to-date information. Infant/Toddler program contacts are shown for jurisdictions that are not Part C grantees, for the convenience of the reader.

ALABAMA

Elizabeth Prince, Part C Coordinator
Early Intervention Program
Department of Rehabilitation Services
2129 East South Boulevard
PO Box 11586
Montgomery, AL 36111-0586
Phone: (334) 613-3543
Fax: (334) 613-3541
AltPhone1: (800) 499-1816 (TTY)
Email: bdprince@rehab.state.al.us
Website: www.rehab.state.al.us/Home/default.aspx?url=/Home/Main

ARIZONA

Molly Dries, Part C Coordinator
and Exec Director
Arizona Early Intervention Program
Department of Economic Security
3839 North 3rd Street, Suite 304
Site Code #801 A-6
Phoenix, AZ 85012
Phone: (602) 532-9960
Fax: (602) 200-9820
AltPhone1: (888) 439-5609 (in AZ)
Email: mdries@azdes.gov
Website: www.de.state.az.us/azeip/default.asp

ALASKA

Jane Atuk, Part C Coordinator
State of Alaska/DHSS
Office of Children's Services, Suite 934
PO Box 240249
Anchorage, AK 99524-0249
Phone: (907) 269-3419
Fax: (907) 269-3497
Fax: (800) 799-7570
Email: jane_atuk@health.state.ak.us
Website: health.hss.state.ak.us/ocs/InfantLearning/default.htm

ARKANSAS

Regina Davenport, Interim Part C Coordinator
Department of Human Services
PO Box 1437, Slot N504
Little Rock, AR 72203-1437
Phone: (501) 682-8699
Fax: (501) 682-8890
AltPhone1: (501) 682-8695
AltPhone2: (888) 439-5609 (in AZ)
Email: regina.davenport@arkansas.gov
Website: www.state.ar.us/dhs/ddds/FirstConn/index.html

AMERICAN SAMOA

Jean Asuega, Part C Coordinator
LBJ Tropical Medical Center
PO Box 7477
Pago Pago, AS 96799
Phone: (684) 699-4990
Fax: (684) 699-4984
Email: drjeanasuega@yahoo.com

BUREAU OF INDIAN AFFAIRS

Bill Walters, Acting Chief
Debbie Lente-Jojola, Education Specialist
BIA-OIEP
Center for School Improvement
500 Gold Avenue SW, Room 7202
PO Box 1088
Albuquerque, NM 87103
Phone: (505) 248-6942 (Walters)
Phone: (505) 248-7552 (Lente-Jojola)
Fax: (505) 248-7545
Email: dlentejojola@bia.edu
Website: www.oiep.bia.edu/body.html

CALIFORNIA

Rick Ingraham, Manager
Early Start
Children and Family Services Branch
Department of Developmental Services
1600 9th Street, MS 3-12
Sacramento, CA 95814
Phone: (916) 654-2773
Fax: (916) 654-3255
AltPhone1: (800) 515-2229
Email: ringraha@dds.ca.gov
Website: www.dds.ca.gov/EarlyStart/ESHHome.cfm

COLORADO

Susan Smith, Part C Coordinator
Prevention Initiatives
State Department of Education, Room 301
201 East Colfax Avenue
Denver, CO 80203-1799
Phone: (303) 866-6709
Fax: (303) 866-6662
AltPhone1: (888) 777-4041
Email: smith_s@cde.state.co.us
Website: www.cde.state.co.us/earlychildhoodconnections/

CONNECTICUT

Linda Goodman, Part C Coordinator
Birth to Three System
Department of Mental Retardation
460 Capitol Avenue
Hartford, CT 06106-1308
Phone: (860) 418-6147
Fax: (860) 418-6003
AltPhone1: (800) 505-7000
Email: linda.goodman@po.state.ct.us
Website: www.birth23.org/

DELAWARE

Rosanne Griff-Cabelli, Part C Coordinator
Division of Management Services
Department of Health and Social Services
1901 North Dupont Highway, Room 204
New Castle, DE 19720
Phone: (302) 255-9135
Fax: (302) 255-4407
Email: rosanne.griff-cabelli@state.de.us
Website: www.state.de.us/dhss/dms/epqc/birth3/directry.html

DEPARTMENT OF DEFENSE

Audrey Ardison, Program Manager
Educational and Developmental
Intervention Services
Health Policy and Services
HQ, US Army Medical Command
2050 Worth Road, Suite 10
Fort Sam Houston, TX 78234
Phone: (210) 221-7943
Fax: (210) 221-7235
Email: audrey.ardison@amedd.army.mil
Website: www.efmconnections.org/efm/

DISTRICT OF COLUMBIA

Ellen Yung-Fatah, Interim Part C Coordinator
Office of Early Childhood Development
DC-EIP Services
717 14th Street NW, 12th Floor
Washington, DC 20002
Phone: (202) 727-1839
Fax: (202) 727-7230
AltPhone1: (202) 698-4656
Email: ellen.fatah@dc.gov
Website: www.militaryhomefront.dod.mil/efm

FLORIDA

Janice Kane, Bureau Chief for
Early Interventions
Children's Medical Services
Early Steps
State Department of Health
4052 Bald Cypress Way SE, BIN A06
Tallahassee, FL 32399-1707
Phone: (850) 245-4444 x4221
Fax: (850) 921-5241
AltPhone1: (800) 654-4440 (Main)
Email: janice_kane@doh.state.fl.us
Website: www.cms-kids.com/

GEORGIA

Stephanie Moss, Part C Coordinator
Office of Children with Special Needs,
Babies Can't Wait Program
Division of Public Health, Family Health Branch
Department of Human Resources
2 Peachtree Street NE, Suite 11-206
Atlanta, GA 30303-3186
Phone: (404) 657-2721
Fax: (404) 657-2763
AltPhone1: (888) 651-8224
Email: skmoss@dhr.state.ga.us
Website: health.state.ga.us/programs/bcw/index.asp

GUAM

Vince Leon Guerrero, Associate Superintendent
Division of Special Education
Department of Education
PO Box DE
Agana, GU 96932
Phone: (671) 475-0549
Fax: (671) 475-0562
Email: doesped1@ite.net

Cathy Tydingco, Part C Administrator
Division of Special Education
State Department of Education
PO Box DE
Agana, GU 96932
Phone: (671) 475-0549
Fax: (671) 475-0562
Email: geis@ite.net

HAWAII

Sue Brown, Part C Coordinator
Early Intervention Section
State Department of Health
1600 Kapiolani Boulevard, Suite 1401
Honolulu, HI 96814
Phone: (808) 973-9656
Fax: (808) 973-9655
Email: sue.brown@fhds.health.state.hi.us
Website: www.hawaii.gov/health/family-child-health/eis/

IDAHO

Mary Jones, Program Manager
Children's Developmental Services
State Department of Health and Welfare
450 West State Street, 5th Floor
PO Box 83720
Boise, ID 83720-0036
Phone: (208) 334-5523
Fax: (208) 334-6664
AltPhone1: (800) 926-2588
Email: jonesm@idhw.state.id.us
Website: www.healthandwelfare.idaho.gov/

ILLINOIS

Janet Gully, Chief
Department of Human Services
Division of Community Health and Prevention
Bureau of Early Intervention
222 South College, 2nd Floor
Springfield, IL 62704
Phone: (217) 782-1981
Fax: (217) 524-6248
AltPhone1: (800) 323-4769 (IL only)
Email: dhsvr50@dhs.state.il.us
Website: www.dhs.state.il.us/ei/

INDIANA

Dawn Downer, Part C Director
First Steps
Bureau of Child Development
Division of Family and Children
402 West Washington Street, #W-386, MS02
Indianapolis, IN 46204
Phone: (317) 233-9229
Fax: (317) 232-7948
AltPhone1: (800) 441-7837 (in IN)
Email: ddowner@fssa.state.in.us
Website: www.eikids.com/matrix/default.asp

IOWA

Julie Curry, State Coordinator
Early ACCESS (IDEA/Part C)
Iowa Department of Education
Bureau of Children, Family,
and Community Services
Grimes State Office Building, 3rd Floor
Des Moines, IA 50319-0146
Phone: (515) 281-5437
Fax: (515) 242-6019
Fax: (800) 779-2001 (inquiries/referrals to
early intervention)
Email: julie.curry@iowa.gov
Website: www.state.ia.us/earlyaccess/

KANSAS

Carolyn Nelson, Director
KDHE-Children's Developmental Services
State Department of Health and Environment
1000 SW Jackson, Suite 220
Topeka, KS 66612-1274
Phone: (785) 296-6136
Fax: (785) 296-8626
AltPhone1: (800) 332-6262 (in KS)
Email: cnelson@kdhe.state.ks.us
Website: www.kdhe.state.ks.us/its/

KENTUCKY

Germaine O'Connell, Acting Part C Coordinator
Division of Adult & Child Health
275 East Main Street, HS2GW-A
Frankfort, KY 40621
Phone: (502) 564-2154 x3763
Fax: (502) 564-8389
AltPhone1: (800) 232-1160
Email: germaine.o'connell@ky.gov
Website: chfs.ky.gov/

LOUISIANA

Nichole Dupree, Program Manager I
Early Steps
Louisiana's Early Intervention System
325 Loyola Avenue, Room 605
New Orleans, LA 70112
Phone: (504) 599-1072
Fax: (504) 599-1082
AltPhone1: (866) 327-5978 (in LA)
Email: nmdupree@dhh.la.gov
Website: [www.oph.dhh.state.la.us/
childrenewsspecial/earlyinterventionservices/
index.html](http://www.oph.dhh.state.la.us/childrenewsspecial/earlyinterventionservices/index.html)

MAINE

Laurie Bertulli, Part C & Section 619 Coordinator
Child Development Services
Department of Education
State House Station #146
Augusta, ME 04333
Phone: (207) 624-6660
Fax: (207) 624-6661
AltPhone1: (800) 355-8611
Email: laurie.bertulli@maine.gov

MARYLAND

Deborah Metzger, Branch Chief
(Part C Coordinator)
Infant/Toddler/Preschool Services
Division of Special Education and
Early Intervention Services
State Department of Education
200 West Baltimore Street
Baltimore, MD 21201
Phone: (410) 767-0261
Fax: (410) 333-2661
AltPhone1: (800) 535-0182 (in MD)
Email: dmetzger@msde.state.md.us
Website: cte.jhu.edu/dse_eis/eis.cfm

MASSACHUSETTS

Ron Benham, Part C Coordinator and
Director of EI
State Department of Public Health
250 Washington Street, 4th Floor
Boston, MA 02108-4619
Phone: (617) 624-5962
Fax: (617) 624-5990
AltPhone1: (617) 624-5070
AltPhone2: (800) 905-8437 (Early
Intervention Programs)
Email: ron.benham@state.ma.us
Website: www.mass.gov/dph/fch/ei.htm

MICHIGAN

Vanessa Winborne, Part C Coordinator
Early On Michigan
Office of Early Childhood Education
and Family Services
State Department of Education
PO Box 30008
Lansing, MI 48909-7508
Phone: (517) 241-1527
Fax: (517) 373-7504
AltPhone1: (800) 327-5966
Email: winbornev@michigan.gov
Website: www.earlyonmichigan.org/

MINNESOTA

Jan Rubenstein, Part C Coordinator
State Department of Education
Special Education Policy
1500 Highway 36 West
Roseville, MN 55113-4266
Phone: (651) 582-8436
Fax: (651) 582-8494
AltPhone1: (800) 728-5420
Email: jan.rubenstein@state.mn.us
Website: [education.state.mn.us/html/
intro_speced_ei.htm](http://education.state.mn.us/html/intro_speced_ei.htm)

MISSISSIPPI

Danita Munday Part C Coordinator
First Steps
State Department of Health
Early Intervention A-107
570 East Woodrow Wilson, PO Box 1700
Jackson, MS 39215-1700
Phone: (601) 576-7816
AltPhone1: (800) 451-3903
AltPhone1: (800) 451-3903 (in MS)
Email: Danita.Munday@msdh.state.ms.us
Website: [www.msdh.state.ms.us/msdhsite/
index.cfm/41.0.74.html](http://www.msdh.state.ms.us/msdhsite/index.cfm/41.0.74.html)

MISSOURI

Deborah Parsons, Part C Coordinator
State Department of Elementary and
Secondary Education
Division of Special Education
PO Box 480
Jefferson City, MO 65102
Phone: (573) 751-2965
Fax: (573) 526-4404
AltPhone1: (866) 583-2392 (First Steps)
Email: debby.parsons@dese.mo.gov
Website: dese.mo.gov/divspeced/FirstSteps/

MONTANA

Erica Peterson, Bureau Chief
Developmental Disabilities Program
Community Services Bureau
Department of Public Health and
Human Services
PO Box 4210
Helena, MT 59604-4210
Phone: (406) 444-5647
Fax: (406) 444-0230
Email: epeterson2@state.mt.us
Website: www.dphhs.state.mt.us/dsd/

NEBRASKA

Joan Luebbers, Part C Co-Coordinator
Special Education Office
State Department of Education
301 Centennial Mall South
PO Box 94987
Lincoln, NE 68509-4987
Phone: (402) 471-2463
Fax: (402) 471-5022
Email: luebbers@nde.state.ne.us
Website: www.nde.state.ne.us/edn/

Charlotte Lewis, Part C Co-Coordinator
Special Services for Children and Adults
(Early Intervention)
State Department of Health and
Human Services
301 Centennial Mall South
PO Box 95044
Lincoln, NE 68509-5044
Phone: (402) 471-9329
Fax: (402) 471-6252
Email: charlie.lewis@hss.state.ne.us
Website: www.nde.state.ne.us/edn

NEVADA

Wendy Whipple, Administrator
Nevada Department of Human Resources
Division of Health
Bureau of Early Intervention Services
3427 Goni Road, Suite 108
Carson City, NV 89706
Phone: (775) 684-3464
Fax: (775) 684-3486
AltPhone1: (800) 522-0066
Email: wwhipple@nvhd.state.nv.us
Website: health2k.state.nv.us/BEIS/

NEW HAMPSHIRE

Carolyn Stiles, Part C Coordinator/
Program Specialist
Family Centered Early Supports and Services
Division of Developmental Services
Department of Health and Human Services
105 Pleasant Street
Concord, NH 03301
Phone: (603) 271-5122
Fax: (603) 271-5166
AltPhone1: (800) 852-3345 (in NH)
Email: cstiles@dhhs.state.nh.us
Website: www.nhdds.org/programs/famchild/earlysupports/

NEW JERSEY

Terry Harrison, Part C Coordinator
Early Intervention Program
Division of Family Health Services
Department of Health and Senior Services
PO Box 364
Trenton, NJ 08625-0364
Phone: (609) 777-7734
Fax: (609) 292-0296
AltPhone1: (800) 322-8174
(Childfind Birth-21)
Email: terry.harrison@doh.state.nj.us
Website: www.njeis.org/

NEW MEXICO

Andy Gomm, Program Manager
Long Term Services Division
State Department of Health
1190 St. Francis Drive
PO Box 26110
Santa Fe, NM 87502-6110
Phone: (505) 827-0103
Fax: (505) 827-2455
AltPhone1: (877) 696-1472
Email: agomm@doh.state.nm.us
Website: www.health.state.nm.us/ltsd/fit/index.html

NEW YORK

Donna Noyes, Director
Early Intervention Program
State Department of Health
Corning Tower, Room 208
Empire State Plaza
Albany, NY 12237-0618
Phone: (518) 473-7016
Fax: (518) 473-8673
AltPhone1: (800) 522-5006
("Growing Up Healthy" 24-Hour Hotline)
AltPhone2: (800) 577-2229 (in NYC)
Email: dmn02@health.state.ny.us
Website: www.health.state.ny.us/nysdoh/eip/

NORTH CAROLINA

Deborah Carroll
Early Intervention Branch Head
Women's & Children's Health Section
Division of Public Health
2302 Mail Service Center
Raleigh, NC 27699-2302
Phone: (919) 855-4450
Fax: (919) 733-3075
Email: deborah.carroll@ncmail.net
Website: www.ncei.org/ei/itp.html

NORTH DAKOTA

Debra Balsdon, Part C Coordinator
Developmental Disabilities Unit
Department of Human Services
600 South 2nd Street, Suite 1A
Bismarck, ND 58504-5729
Phone: (701) 328-8936
Fax: (701) 328-8969
AltPhone1: (800) 755-8529 (In ND)
Email: sobald@state.nd.us
Website: www.state.nd.us/humanservices/

NORTHERN MARIANA ISLANDS

Suzanne Lizama, Coordinator
CNMI Public Schools
PO Box 1370 CK
Saipan, MP 96950
Phone: (670) 664-3754
Fax: (670) 664-3796
Email: slizama@gtepacifica.net

OHIO

Debbie Cheatham, Part C Coordinator
Bureau of EI Services
State Department of Health
246 North High Street, 5th Floor
PO Box 118
Columbus, OH 43266-0118
Phone: (614) 644-9164
Fax: (614) 728-9163
AltPhone1: (800) 755-4769
Email: dcheatha@odh.ohio.gov
Website: [www.odh.state.oh.us/ODHPrograms/
EI/earlyint1.htm](http://www.odh.state.oh.us/ODHPrograms/EI/earlyint1.htm)

OKLAHOMA

Mark Sharp, Part C Coordinator
Special Education Office
State Department of Education
Oliver Hodge Memorial Education Building,
4th Floor
2500 North Lincoln Boulevard
Oklahoma City, OK 73105-4599
Phone: (405) 521-4880
Fax: (405) 522-3503
Email: mark_sharp@mail.sde.state.ok.us
Website: sde.state.ok.us/home/defaultie.html

OREGON

Nancy Latini, Interim Part C Contact
Early Intervention/Early Childhood
Special Education
State Department of Education
255 Capitol Street NE
Salem, OR 97310-0203
Phone: (503) 378-3600 x2361
Fax: (503) 373-7968
Email: nancy.latini@state.or.us
Website: [www.ode.state.or.us/search/
results/?id=252](http://www.ode.state.or.us/search/results/?id=252)

PALAU

Elizabeth Watanabe, Coordinator
Ministry of Education
Republic of Palau
PO Box 189
Koror, Palau, PW 96940
Phone: (680) 488-2537
Fax: (680) 488-2830

PENNSYLVANIA

Maureen Cronin, Part C Coordinator
Division of Program Implementation
Office of Mental Retardation
Department of Public Welfare
PO Box 2675
Harrisburg, PA 17105-2675
Phone: (717) 783-7213
Fax: (717) 772-0012
AltPhone1: (800) 692-7288
Email: mcronin@state.pa.us
Website: [www.dpw.state.pa.us/Child/
EarlyIntervention/](http://www.dpw.state.pa.us/Child/EarlyIntervention/)

PUERTO RICO

Naydamar Perez de Otero, Coordinator
Part C Program
Office of the Secretary
State Department of Health
Call Box 70184
San Juan, PR 00936
Phone: (787) 274-5659
Fax: (787) 274-3301
Email: nperez@salud.gov.pr
Website: www.salud.gov.pr/Divisiones/Servicios%20Habilitacion.htm

RHODE ISLAND

Deborah Florio, Part C Coordinator
Department of Human Services
Center for Child and Family Health
600 New London Avenue
Cranston, RI 02920
Phone: (401) 462-0140
Fax: (401) 462-6253
Email: dflorio@dhs.ri.gov
Website: www.dhs.ri.gov/dhs/famchild/early_intervention.htm

SOUTH CAROLINA

Kathy Semon, Part C Coordinator
Bureau of Maternal and Child Health
1751 Calhoun Street
Columbia, SC 29201
Phone: (803) 898-0618
Fax: (803) 898-0613
Email: semonkm@dhec.sc.gov
Website: www.scdhec.net/health/mch/cshcn/programs/babynet/

SOUTH DAKOTA

Sherrie Fines, Part C Coordinator
Office of Special Education
Department of Education
Kneip Building
700 Governors Drive
Pierre, SD 57501-2291
Phone: (605) 773-3678
Fax: (605) 773-3782
AltPhone1: (800) 305-3064 (in SD)
Email: sherrie.fines@state.sd.us
Website: www.state.sd.us/deca/Special/Birthto3/index.htm

TENNESSEE

Brenda Bledsoe, Director/Acting
Part C Coordinator
Office of Special Education
State Department of Education
Andrew Johnson Tower, 5th Floor
710 James Robertson Parkway
Nashville, TN 37243-0375
Phone: (615) 741-3537
Fax: (615) 532-9412
AltPhone1: (888) 212-3162
Email: brenda.bledsoe@state.tn.us
Website: www.state.tn.us/education/teishome.htm

TEXAS

Mary Beth O'Hanlon, Assistant Commissioner
Texas Early Childhood Intervention Program
Department of Assistive and
Rehabilitative Services
Brown-Heatly State Office Building
4900 North Lamar
Austin, TX 78751-2399
Phone: (512) 424-6754
Fax: (512) 424-6749
AltPhone1: (800) 250-2246
(Information & Referral)
Email: marybeth.o'hanlon@dars.state.tx.us
Website: www.eci.state.tx.us/

UTAH

Susan Ord, Part C Coordinator
Baby Watch Early Intervention
State Department of Health
PO Box 144720
Salt Lake City, UT 84114-4720
Phone: (801) 584-8441
Fax: (801) 584-8496
AltPhone1: (800) 961-4226
Email: sord@utah.gov
Website: www.utahbabywatch.org

VERMONT

Helen Keith, Part C Coordinator
Family, Infant and Toddler Project
PO Box 70
Burlington, VT 05402
Phone: (802) 651-1786
Fax: (802) 863-7635
AltPhone1: (800) 660-4427 (V/TTY)
Email: hkeith@vdh.state.vt.us
Website: www.state.vt.us/health/hi/cshn/fitp/fitp.htm

VIRGIN ISLANDS

Rene Joseph Rhymer, Director
Infant/Toddler Program
Department of Health
Estate Contant
78 1-2-3
St. Thomas, VI 00802
Phone: (340) 777-8804 x2631
Fax: (340) 774-2820
Email: birthto3usvi@viaccess.net

VIRGINIA

Mary Ann Discenza, Part C Coordinator
Infant and Toddler Connection of VA
Department of MH/MR/SA Services
PO Box 1797
Richmond, VA 23218-1797
Phone: (804) 371-6592
Fax: (804) 371-7959
AltPhone1: (800) 234-1448 (Central Directory
for Early Intervention Services)
Email: maryann.discenza@co.dmhmrzas.virginia.gov
Website: www.infantva.org/

WASHINGTON

Sandy Loerch Morris, Part C Coordinator
Infant Toddler Early Intervention Program
Department of Social and Health Services
640 Woodland Square Loop SE
PO Box 45201
Olympia, WA 98504-5201
Phone: (360) 725-3516
Fax: (360) 725-3523
Email: loercsk@dshs.wa.gov
Website: www1.dshs.wa.gov/iteip/

WEST VIRGINIA

Pam Roush, Part C Coordinator
Early Intervention Program
Office of Maternal and Child Health
Department of Health and Human Resources
350 Capital Street, Room 427
Charleston, WV 25301
Phone: (304) 558-6311
Fax: (304) 558-4984
AltPhone1: (304) 558-3071
AltPhone2: (866) 321-4728
Email: pamroush@wvdhhr.org
Website: www.wvdhhr.org/mcfh/birth23/

WISCONSIN

Beth Wroblewski, Part C Coordinator
Family Centered Services and Systems
Administration
Bureau of Developmental Disabilities
1 West Wilson Street, Room 418
PO Box 7851
Madison, WI 53707-7851
Phone: (608) 266-7469
Fax: (608) 261-6752
AltPhone1: (800) 642-7837
Email: wroblbm@dhfs.state.wi.us
Website: dhfs.wisconsin.gov/bdds/birthto3/

WYOMING

Carole Grisham, Part C Coordinator
Division of Developmental Disabilities
Early Intervention Council
186 East Qwest Building
6101 Yellowstone Road
Cheyenne, WY 82002
Phone: (307) 777-6972
Fax: (307) 777-6047
AltPhone1: (800) 996-4769
Email: cgrish@state.wy.us
Website: ddd.state.wy.us/Documents/mitch1.htm

Chairs of the State and Jurisdictional Interagency Coordinating Councils (ICCs) Under Part C of IDEA

This information is maintained at the NECTAC Web site (www.nectac.org/contact/iccchair.asp). Readers are encouraged to visit the site for up-to-date information. ICC Chairs are shown for jurisdictions that are not Part C grantees, for the convenience of the reader.

ALABAMA

Glenn Harger, ICC Chair
United Cerebral Palsy of Mobile
3058 Dauphin Square Connector
Mobile, AL 36607
Phone: (334) 479-4900
Fax: (334) 479-4998
Email: gharger1947@aol.com

ALASKA

Beth Edmans, ICC Chair
Challenge Alaska
3350 Commercial Drive, Suite 208
Anchorage, AK 99501
Phone: (907) 344-7399
Fax: (907) 344-7349
Email: challenge.admin@acsalaska.net
Website: www.challenge.ak.org

AMERICAN SAMOA

Maryann Tulafano, ICC Chair
LBJ Tropical Medical Center
American Samoa Hospital Authority
Government of American Samoa
Pago Pago, AS 96799
Phone: (684) 633-4929
Fax: (684) 633-2167

ARIZONA

DeAnn Davies, ICC Chair
Healthy Steps Program Coordinator
Phoenix Children's Hospital
Outpatient Specialty Care, General Pediatrics
1919 East Thomas Road
Phoenix, AZ 85016
Phone: (602) 546-0236
Email: ddavies@phxchildrens.com

Maria Bravo, ICC Vice Chair
1634 South Santa Cruz Lane
Tucson, AZ 85713-1424
Phone: (520) 885-1528
Fax: (520) 745-1257
Email: mariabravo@mindspring.com

ARKANSAS

Position Vacant
1437 Slot N 504
Little Rock, AR 72203
Phone: (501) 682-8670
Fax: (501) 682-8890
Email: ella.hubbert@arkansas.gov

CALIFORNIA

Raymond Peterson, ICC Chair
San Diego-Imperial Counties Development
Services, Inc.
4355 Ruffin Road, Suite 206
San Diego, CA 92123-1648
Phone: (858) 576-2932
Fax: (858) 576-2873

COLORADO

Donna Batkis, ICC Co-Chair
Pam Christy, ICC Co-Chair
c/o Colorado Department of Education
201 East Colfax Avenue
Denver, CO 80203
Phone: (303) 866-6710 (Batkis)
Fax: (303) 866-6662
Email: dbatkis@hotmail.com
Email: pkchristy@earthlink.net
Website: [www.cde.state.co.us/
earlychildhoodconnections/cicc.htm](http://www.cde.state.co.us/earlychildhoodconnections/cicc.htm)

CONNECTICUT

Laurel Ross, Acting ICC Chair
ARC Youth Division
132 East Putnam Avenue
Cos Cob, CT 06807
Phone: (203) 629-1880 x132
Fax: (203) 629-4390
Email: ross@arcgreenwich.org

DELAWARE

Beth MacDonald, ICC Chair
35 West Fairfield Drive
Dover, DE 19901
Phone: (302) 697-1976
Fax: (302) 698-1778
Email: bmacdonfv@juno.com

DISTRICT OF COLUMBIA

Ruby Gourdine, ICC Chair
School of Social Work
Howard University
601 Howard Place NW
Washington, DC 20059
Phone: (202) 806-4733
Fax: (202) 387-4309

FLORIDA

Paula Kendig, ICC Chair
2921 Inverness Place
Pensacola, FL 32503
Phone: (850) 434-8131
Fax: (850) 434-8132
Email: pkendig@aol.com

GEORGIA

Cynthia Vail, ICC Chair
Department of Special Education
University of Georgia
570 Aderhold Hall
Athens, GA 30602
Phone: (706) 542-4578
Fax: (706) 542-2929
Email: cvail@coe.uga.edu
Website: www.health.state.ga.us/programs/_bcw/icc.asp

GUAM

Mamie Balajadia, ICC Chair
PO Box 12061
Tamuning, GU 96931
Phone: (671) 632-6263
Fax: (671) 646-4058
Email: mamieb@tniguam.com

HAWAII

Jennifer Schember-Lang, ICC Chair
Learning Disabilities Association of Hawai'i
200 North Vineyard Boulevard, Suite 310
Honolulu, HI 96817
Phone: (808) 536-9684
AltPhone1: (808) 537-6780
Email: jschember-lang@ldahawaii.org

IDAHO

Mary Dunne, ICC Chair
Idaho School for the Deaf and Blind
1450 Main Street
Gooding, ID 83330
Phone: (208) 934-4457
Fax: (208) 934-8352
Email: mdunne@isdb.state.id.us

Lisa Richards-Evans, ICC Vice Chair
Region 1 IPUL Parent Education Coordinator
2025 St. Estephe Court
Hayden, ID 83835
Phone: (208) 762-3484
Email: lisarevans@aol.com

ILLINOIS

Anne Shannon, ICC Chair
Aspire of Illinois
9901 Derby Lane
Westchester, IL 60154
Phone: (708) 547-3597
Fax: (708) 547-4067
Email: anneshannon@aspireofillinois.org

INDIANA

Valerie Strohl, ICC Chair
755 Sugarbush Drive
Zionsville, IN 46077
Phone: (317) 733-0706
Email: strohl8@aol.com

IOWA

Robert Bacon, ICC Chair
Iowa's University Center for Excellence on
Disabilities
Center for Disabilities and Development
100 Hawkins Drive, Rm 225
Iowa City, IA 52242
Phone: (319) 356-1335
Fax: (319) 356-8284
Email: robert-bacon@uiowa.edu
Website: www.healthcare.uiowa.edu/cdd/index.asp

KANSAS

Ellen Mellard, ICC Chair
Northeast Kansas Education Service
PO Box 320
Lecompton, KS 66050
Phone: (785) 887-6711
Email: emellard@nekesc.org

KENTUCKY

Lee Ann Jung, ICC Chair
University of Kentucky
124 Taylor Education Building
Lexington, KY 40506-0001
Phone: (859) 257-7905
Fax: (589) 257-1325
Email: ljung@uky.edu

LOUISIANA

Senator Willie Mount, ICC Chair
PO Box 3004
Lake Charles, LA 70602
Phone: (337) 491-2016
Fax: (337) 433-8080
Email: lasen27@legis.state.la.us
Website: www.gov.state.la.us/sicc/sicc/sicc/sicchome.asp

MAINE

Jean Eaton, ICC Chair
CDS Lincoln County
PO Box 1114
Damariscotta, ME 04543-1114
Phone: (207) 563-1411
Fax: (207) 563-6312

MARYLAND

Linda Ramsey, ICC Co-Chair
Friends of the Family
1001 Eastern Avenue, 2nd Floor
Baltimore, MD 21202-4364
Phone: (410) 659-7701 x122
Fax: (410) 783-0814
Email: lramsey@friendsofthefamily.org
Website: www.friendsofthefamily.org

Donna Njoku, ICC Co-Chair
12624 Trotwood Court
Beltsville, MD 20725
Phone: (301) 419-2479
Fax: (301) 419-2471
Email: donnanjok1@aol.com

MASSACHUSETTS

Barbara Prindle Eaton, ICC Chair
Cape Cod and Islands Early Childhood
Intervention Program
83 Pearl Street
Hyannis, MA 02601
Phone: (508) 775-6240
Fax: (508) 790-4774
Email: bpeaton@cccdp.org

MICHIGAN

Mac Miller, ICC Chair
Livingston County CMH Services
2280 East Grand River
Howell, MI 48843
Phone: (517) 546-4126
Fax: (517) 546-1300
Email: macmiller@cmhliv.org

MINNESOTA

Dawn Bly, ICC Chair
704 Third Street NE
Fosston, MN 56542
Phone: (218) 435-6060 (Home)
Phone: (218) 435-1909 (Work)
Email: blyfam@gvtel.com

MISSISSIPPI

Louis Aldridge, ICC Co-Chair
PO Box 2611
Tupelo, MS 38803-2611
Phone: (601) 842-3569
Email: laldridge@dixie-net.com

Hillman Frazier, ICC Co-Chair
2066 Queensroad Avenue
Jackson, MS 39213
Phone: (601) 359-3453
Email: hfrrazier@mail.lbo.state.ms.us

MISSOURI

Valerie Lane, Director
Family and Child Development
600 East 14th Street
Sedalia, MO 65301
Phone: (660) 826-4400
Fax: (660) 826-4420
Email: vlane@chs-mo.org

Elizabeth Spaugh, ICC Co-Chair
7680 Meadowbrook Land
Barnhart, MO 63012
Phone: (636) 461-0324
Email: elizabethspaugh1@msn.com

MONTANA

Kelly Johnson, ICC Chair
T-214 Fort Missoula Road
Missoula, MT 59804
Phone: (406) 755-2425
Fax: (406) 755-2426
Email: kjohnson@wmcddc.org

NEBRASKA

Lea Ann Johnson, ICC Chair
Lincoln Public Schools
5900 O Street
Lincoln, NE 68510
Phone: (402) 436-1964
Fax: (402) 441-4883
Email: ljohns2@lps.org

NEVADA

Keith Allred, ICC Chair
Office of Elementary and Secondary Education
Special Education and School Improvement
700 East 5th Street, Suite 113
Carson City, NV 89701
Phone: (775) 687-9170
Fax: (775) 687-9123
Email: kallred@nsn.k12.nv.us

NEW HAMPSHIRE

Mollie White, ICC Chair
PO Box 4
Twin Mountain, NH 03595
Phone: (603) 846-5049
Email: cstiles@dhhs.state.nh.us

NEW JERSEY

William Agress, ICC Chair
32 Pagoda Court
Lawrenceville, NJ 08648
Phone: (609) 895-0099
Fax: (609) 895-9592
Email: njsicc@aol.com

Antoinette Spiotta, ICC Vice Chair
517 Watchung Avenue
Bloomfield, NJ 07003
Phone: (973) 655-4255
Fax: (973) 655-5155
Email: spiotta@mail.montclair.edu

NEW MEXICO

Jane Larson, ICC Chair
Native American Pueblo Parent Resources
(NAPPR), Inc.
8330 Washington Place NE, Suite A
Albuquerque, NM 87113
Phone: (505) 345-6289
Fax: (505) 345-6478
Email: jzlarson@nappr.org

NEW YORK

Thomas Roach, ICC Chair
Ulster County Social Services
7 Cicero Avenue
New Paltz, NY 12561
Phone: (914) 255-1713
Fax: (914) 255-3202
Email: troa12@aol.com

NORTH CAROLINA

Caroline Sullivan, ICC Co-Chair
1306 Rand Drive
Raleigh, NC 27608
Phone: (919) 783-0501
Email: finkleasullivan@mindspring.com

Cheryl Mulloy, ICC Co-Chair
Easter Seals UCP North Carolina
200 Hummingbird Lane
Waynesville, NC 28786
Phone: (828) 734-9411
Email: cmulloy@nc.eastersealsucp.com

NORTH DAKOTA

Peg Crane, ICC Chair
P. O. Box 264
Mott, ND 58646
Phone: (701) 824-2871
Email: pdcrane@ctctel.com

Roxane Romanick, ICC Vice Chair
616 Crescent Lane
Bismarck, ND 58501
Phone: (701) 258-7421
Email: romanick@bis.midco.net

NORTHERN MARIANA ISLANDS

Thomas Camacho, ICC Chair
CNMI Public School System
PO Box 502565
Saipan, MP 96950-2565
Phone: (670) 664-7000
Fax: (670) 664-7030
Email: tcamacho@cnmiddcouncil.org
Website: www.cnmiddcouncil.org/

OHIO

Kimberly Christensen, ICC Co-Chair
503 McKinley Drive
Bowling Green, OH 43402
Phone: (419) 372-7299
Email: kchris@bgnet.bgsu.edu

Beth Popich, ICC Co-Chair
Clermont County Board of MRDD
PO Box 8
Owensville, OH 45160
Phone: (513) 732-7026
Email: bpopich@ccmrdd.org

OKLAHOMA

Candy Chavez, ICC Chair
PO Box 12501
Oklahoma City, OK 73157-2501
Phone: (405) 789-4350 x2049
Fax: (405) 789-1662
AltPhone1: (405) 771-3185
Email: cchavez@putnamcityschools.org

OREGON

Pamela Deardorff, ICC Chair
Teaching Research Division
Western Oregon University
345 North Monmouth Avenue
Monmouth, OR 97361-1314
Phone: (503) 838-8780
Fax: (503) 838-8150
Email: deardop@wou.edu

PALAU

Gillian Johannes, ICC Chair
Special Education Advisory Council
Republic of Palau
PO Box 716
Koror, Palau, PW 96940
Phone: (680) 488-2318
Fax: (680) 488-1211
AltPhone1: (680) 587-3632

PENNSYLVANIA

Sarah Holland, ICC Co-Chair
416 East Ross Street
Lancaster, PA 17602
Phone: (717) 397-4015 x109
Email: sholland@gotoskn.org

Janice Matthew, ICC Co-Chair
577 Thorncliffe Drive
Pittsburgh, PA 15205
Phone: (412) 323-3960
Email: drjmatthew@aol.com

PUERTO RICO

Ana Navarro, ICC Chair
Calle Francisco Sein #503
Floral Park
Hato Rey, PR 00917
Phone: (787) 759-6546
Fax: (787) 759-6719

RHODE ISLAND

Dawn Wardyga, ICC Chair
Rhode Island Parent Information Network
175 Main Street
Pawtucket, RI 02860
Phone: (401) 727-4144 x158
Fax: (401) 727-4040
Email: familyvoices@ripin.org
Website: www.ripin.org/

SOUTH CAROLINA

Michael Jameson, ICC Vice Chair
211 Shelton Drive
Spartanburg, SC 29307
Phone: (864) 579-7640
Email: mej1965@att.net

SOUTH DAKOTA

Rosalyn Goodwin, ICC Chair
1608 East Cedar Court
Brandon, SD 57005
Phone: (605) 558-2635
Email: dpg@alliancecom.net

TENNESSEE

Lynne Harmon, ICC Chair
Parent-Child Services Group, Inc.
Suite 180 South
1225 East Weisgarber Road
Knoxville, TN 37909
Phone: (865) 584-5558 x101
Fax: (865) 584-6607
Email: lynneh@parent-childservices.com

TEXAS

Peter Ellis, ICC Parent Chair
8603 Botts Street
San Antonio, TX 78217
Phone: (210) 325-7578
Fax: (210) 826-2856
Email: peter.e@sbcglobal.net

UTAH

Barbara J. Fiechtl, ICC Chair
UMC 2865, Department of Special Education
Utah State University
Logan, UT 84322-2865
Phone: (435) 797-3258
Fax: (435) 797-3572
Email: bjfic@cc.usu.edu

VERMONT

Terri Edgerton, ICC Co-Chair
Rutland County Parent Child Center
61 Pleasant Street
Rutland, VT 05701
Phone: (802) 775-9711
Email: rcpcc@bluemoo.et

Pam McCarthy, ICC Co-Chair
Family Center of Northwestern Vermont
27 Lower Newton Street
St. Albans, VT 05478
Phone: (802) 524-6574 X219
Email: pmccarthy@ncssinc.org

Ginger Potwin, ICC Co-Chair
87 Radio Drive
Randolph, VT 05060
Phone: (802) 728-6216
Email: gpotwin@innevi.com

VIRGIN ISLANDS

Steve Hunte, ICC Chair
PO Box 4413
St. Thomas, VI 00803
Phone: (340) 777-9550
Fax: (340) 776-1535
Email: shunte128@netscape.net

Maureen Moorehead, ICC Vice Chair
PO Box 5622
St. Croix, VI 00823
Phone: (340) 773-7997
Fax: (340) 773-4640
Email: mmooreh@viaccess.net

VIRGINIA

Brenda Laws, ICC Chair
Parent Infant Program on the Shore
15150 Merry Cat Lane
PO Box 70
Belle Haven, VA 23306
Phone: (757) 442-7599
Fax: (757) 442-4578
Email: luvdoves@intercom.net

WASHINGTON

Bonnie Sandahl, ICC Chair
Seattle Children's Home
2142 Tenth Avenue West
Seattle, WA 98119
Phone: (206) 298-9679
Fax: (206) 284-7843
Email: bsandahl@seattlechildrenshome.org

WEST VIRGINIA

Gail Foley, ICC Chair
Route 1, Box 631
Greenwood, WV 26415
Phone: (304) 873-1834
Email: gfoley@iolinc.net

WISCONSIN

Sandra Butts, ICC Chair
Milwaukee County Developmental Disabilities
235 North Galena Street
Milwaukee, WI 53212
Phone: (414) 289-5944
Fax: (414) 289-8570
Email: sbutts@milwcnty.com

WYOMING

Dorothy Ailes, ICC Chair
Children's Special Health Services
4020 House Avenue
Cheyenne, WY 82002
Phone: (307) 777-7941
Email: dailes@state.wy.us

Contact List of State ICC Staff

ALASKA

Judith Bendersky
ICC Staff
Governor's Council on Disabilities and
Special Education
3601 C Street, Suite 740
PO Box 240249
Anchorage, AK 99524-0249
Phone: (907) 269-8994
Fax: (907) 269-8995
Email: judith_bendersky@health.state.ak.us

ARIZONA

Art Puig
Program Reviewer
Department of Economic Security
1717 West Jefferson, SC 801A-6
Phoenix, AZ 85005
Phone: (602) 542-5589
Fax: (602) 542-5552
Email: azeip@rocketmail.com

CALIFORNIA

Cheri Schoenborn
Chief, Early Start State
Services Section
Early Start
Children and Family Services Branch
Department of
Developmental Services
1600 9th Street, MS:3-12
Sacramento, CA 95814
Phone: (916) 654-2767
Fax: (916) 654-3255
Email: cschoenb@dds.ca.gov
Website: [www.dds.ca.gov/EarlyStart/
main/ESHHome.cfm](http://www.dds.ca.gov/EarlyStart/main/ESHHome.cfm)

CONNECTICUT

Eileen McMurrer
Coordinator
CT Birth to Three System
460 Capitol Avenue
Hartford, CT 06106-6134
Phone: (860) 418-6134
Fax: (860) 418-6003
Email: eileen.mcmurrer@po.state.ct.us
Website: www.birth23.org

FLORIDA

K. Renee Jenkins
ICC Staff
CMS Infants & Toddlers EI Program
4052 Bald Cypress Way, Bin #A06
Tallahassee, FL 32399-1707
Phone: (850) 245-4444 x2233
Fax: (850) 414-7350
Email: renee_jenkins@doh.state.fl.us

GEORGIA

Ethel Curtis
ICC Staff
Babies Can't Wait Program
Division of Public Health, Family Health Branch
Department of Human Resources
2 Peachtree Street, NE, Room 11-204
Atlanta, GA 30303-3186
Phone: (404) 463-3474
Fax: (404) 657-2763
Email: edcurtis@dhr.state.ga.us

INDIANA

Jan Bledsoe
ICC Staff
1802 Mace Drive
Indianapolis, IN 46229
Phone: (317) 894-0818
Email: jbledsoe@child-dev.com
Fax: (317) 894-8577

IOWA

Kay Leeper
ICC Facilitator
Early ACCESS
University of Iowa Hospitals and Clinics
1407 Independence, 4th Floor
Waterloo, IA 50703
Phone: (319) 291-2690 X284
Fax: (319) 291-2659
Email: kleeper@cfu.net

KANSAS

Doug Bowman
ICC Executive Coordinator
Infant Toddler Program
Department of Health and Environment
1000 SW Jackson, Suite 220
Topeka, KS 66612-1274
Phone: (785) 296-1294
Fax: (785) 296-8616
Email: dbowman@kdhe.state.ks.us

LOUISIANA

Janie Martin
Executive Director
State Interagency
Coordinating Council
Office of the Governor
PO Box 1509
Baton Rouge, LA 70821-1509
Phone: (225) 219-7560
Fax: (225) 219-7561
Email: janie.martin@gov.state.la.us

MASSACHUSETTS

Darla Gundler
ICC Staff
Department of Public Health
23 Service Center
Northhampton, MA 01060
Phone: (413) 586-7525 x1157
Fax: (413) 784-1037
Email: darla.gundler@state.ma.us

MICHIGAN

Teresa Marvin
Parent Representative
117 South East Street
Portland, MI 48875
Phone: (517) 241-9886
Fax: (517) 335-7789
Email: marvint@michigan.gov

NEW MEXICO

Suzanne Pope
ICC Coordinator/Chief Liaison
Family Infant Toddler Program
New Mexico Department of Health
191 Rincon Loop
Tijeras, NM 87059
Phone: (505) 286-1030
Fax: (505) 286-1032
Email: supope@msn.com

NORTH CAROLINA

Karen Chester
Executive Director
NC-ICC
Program Development Branch, Division of
Child Development
319 Chapanoke Road
PO Box 29553
Raleigh, NC 27626-0553
Phone: (919) 662-4543 x278
Fax: (919) 662-4568
Email: karen.chester@ncmail.net

OHIO

Janice Anders,
CC Staff
Early Intervention Council Coordinator
Department of Health
246 North High Street, 5th Floor
PO Box 118
Columbus, OH 43266-0118
Phone: (614) 466-6251
Fax: (614) 728-9163
Email: janders@gw.odh.state.oh.us

SOUTH CAROLINA

Joann Moton
ICC Director
Bureau of Maternal & Child Health
Department of Health and Environmental
Control
Mills/Jarrett Complex
PO Box 101106
Columbia, SC 29201
Phone: (803) 898-0428
Fax: (803) 898-0613
Email: motonjo@columb61.dhec.state.sc.us
Website: www.scdhec.net/babynet

VIRGINIA

Cori Hill
ICC Staff and EI Training Specialist
Infant & Toddler Connection of VA
Department of Mental Health, Mental
Retardation
Jefferson Building
1220 Bank Street, Box 1797
Richmond, VA 23218-1797
Phone: (540) 943-6776
Fax: (540) 943-6776
Email: corihill@ntelos.net
Website: www.infantva.org

Section II:

Part C Program Implementation Resources

States' Part C Rules, Regulations and Policies: On-line resources.....	35
(This information is maintained at www.nectac.org/partc/statepolicies.asp .)	
State and Jurisdictional Eligibility Definitions for Infants and Toddlers with Disabilities Under IDEA by Jo Shackelford (<i>NECTAC Notes</i> No. 18, March 2005).....	37
(This information is maintained along with other publications at www.nectac.org/ .)	
Survey of Part C Coordinators and Assistive Technology by Campbell, P., Milbourne, S. and Wilcox, M. (Research Brief Volume 1, Number 4. Tots n Tech Research Institute.).....	53

States' Part C Rules, Regulations and Policies: On-line resources

NECTAC is building a collection of links to state Part C policies that are online. This collection appears on the NECTAC Web site at www.nectac.org/partc/statepolicies.asp. This web page is reproduced below. The URLs are shown for printing purposes. NECTAC has requested states to contact Sue Goode (sue_goode@unc.edu) to add their materials to the list.

CALIFORNIA

- Government Code, Title 14. California Early Intervention Services Act (Retrieved April 2005) - http://www.dds.ca.gov/statutes/governmentcode_main.cfm
- Title 17 Regulations: Chapter 2 - Early Intervention Services (February 2005) - <http://www.dds.ca.gov/Title17/T17Main.cfm#ES>

CONNECTICUT

- CT State Laws and Regulations (June 2004) - <http://www.birth23.org/Laws%20and%20Regulations/default.asp>
- CT Procedures Manual 2004 - <http://www.birth23.org/publications>
- CT Service Guidelines - <http://www.birth23.org/publications> (then select a specific topic)

FLORIDA

- Early Steps Service Delivery Policy and Guidance Document (February 2005) - <http://www.cms-kids.com/EarlySteps/EarlyStepsPolicy.pdf>
- Summary and Reasons for Revisions to the Policy and Guidance document (February 2005)- http://www.cms-kids.com/EarlySteps/ES_ServiceDeliveryPolicyMemo020105.pdf
- Florida's Early Steps Policies and Procedures Web page - <http://www.cms-kids.com/EarlyStepsPolicy.htm>

HAWAII

- Hawaii statutes for infants and toddlers (Retrieved April 2005) - <http://www.hawaii.gov/health/family-child-health/eis/hrs.doc>
- Hawaii's Professional Standards for Early Intervention Services Staff (2001) - <http://www.seek.hawaii.edu/Products/4-Info-Binder/Profess-Standards.pdf>

IDAHO

- Idaho Statute for Early Intervention Services - <http://www3.state.id.us/idstat/TOC/16001KTOC.html>

ILLINOIS

- IL Early Intervention Laws and Rules (Retrieved April 2005) - <http://www.state.il.us/agency/dhs/earlyint/ei01lawsandr.html>
- IL Early Intervention Policies and Procedures (Retrieved April 2005) - <http://www.state.il.us/agency/dhs/earlyint/ei01policyandp.html>

IOWA

- Iowa Administrative Rules of Early ACCESS Integrated System of Early Intervention Services (January 2003) - <http://www.state.ia.us/earlyaccess/legis.html>

INDIANA

- Policy information for First Steps Program (Retrieved April 2005) - http://www.state.in.us/fssa/first_step/policy/index.html

KENTUCKY

- First Steps Program Policy and Procedure Manual (2002) - <http://chfs.ky.gov/dph/pptablecontents.htm>

MASSACHUSETTS

- Massachusetts Early Intervention Operational Standards (2003) - <http://www.mass.gov/dph/fch/ei.htm>

- Numerous Early Intervention policy updates, especially those regarding personnel, are posted at <http://www.eitrainingcenter.org/dphinfo.htm>
- The MA Parent Leadership Project Web site contains policy links and a list of resources regarding the MA Interagency Coordinating Council - <http://www.eiplp.org/parent.html>

MICHIGAN

- Procedural Safeguards (Retrieved April 2005) - http://www.michigan.gov/documents/ProcSafeStandards_55737_7.pdf
- Michigan Department of Education's Early On Web site - http://www.michigan.gov/mde/0,1607,7-140-5233_5988--,00.html

MINNESOTA

- Minnesota State Statutes (2004). See sections 125A.26 through 125.50 - <http://www.revisor.leg.state.mn.us/data/revisor/statutes/2004/125A/>
- Eligibility is under Minnesota Rules, Chapter 3525.1350 (2005) - <http://www.revisor.leg.state.mn.us/arule/3525/1350.html>

MISSOURI

- Missouri Regulations for Part C of IDEA (Retrieved April 2005) <http://dese.mo.gov/divspeced/FirstSteps/RulesRegs.html>
- Early Intervention Practice Manual (Retrieved April 2005)- <http://dese.mo.gov/divspeced/FirstSteps/EISpracmanual.html>

NEBRASKA

- Early Intervention Services Coordination (Revised July 2000) - http://www.sos.state.ne.us/business/regsearch/Rules/Health_and_Human_Services_System/Title-480/Chapter-10.pdf

NEVADA

- Nevada's Early Intervention Policy Document (2001) - <http://health2k.state.nv.us/BEIS/NevedaEarlyInterventionPolicyDoc2001.pdf>

NEW MEXICO

- Family Infant Toddler Program Regulations 7.30.8 NMAC (Retrieved April 2005) - <http://www.health.state.nm.us/itsd/fit/pdf%5C7308nmac.pdf>
- NM Rules and Regulations Web page - <http://www.health.state.nm.us/itsd/fit/rulsregs.html>

NORTH CAROLINA

- Infant Toddler Program Manual (DRAFT - being revised as of April 2005) - <http://www.ncei.org/ei/inftodmanual.html>

OHIO

- Ohio Help Me Grow Policies (2002)- <http://www.ohiohelpmegrow.org/About/hgpolicy.htm>

OREGON

- EI/ECSE Policies and Procedures (Revised July 2002) - http://www.ode.state.or.us/gradelevel/pre_k/eiecse/pdfs/eipolicyandproc.pdf
- Oregon's EI/ECSE Web page http://www.ode.state.or.us/gradelevel/pre_k/eiecse/abouteiecse.aspx

VIRGINIA

- Virginia's Part C Policies and Procedures (Retrieved April 2005) - <http://www.infantva.org/ovw-PoliciesProcedures.htm>

WASHINGTON

- Washington State's 2004 Federal Application - <http://www1.dshs.wa.gov/iteip/FedAppPolicies.html>

WISCONSIN

- Early Intervention Services for Children From Birth to Age 3 with Developmental Needs (2004) - <http://www.legis.state.wi.us/rsb/code/hfs/hfs090.pdf>