



“Learn the Signs. Act Early.” Collaboration to improve developmental monitoring and earlier identification

2018 Improving Data Improving Outcomes Conference

Arlington, VA

August 2018

Session Outcomes

**Gain knowledge
of OSEP Child
Find resources**

**Gain knowledge
about Learn the
Signs Act Early
Campaign
resources and
State
Ambassador
Program**

**Learn about
collaborative
partnerships
with state Part C
programs and
their Act Early
Ambassador**

Presenters

Brenda Wilkins, OSEP Monitoring and State Improvement Planning Div.

Julia Abercrombie, “Learn the Signs. Act Early.” CDC

Renee Jenkins, FL Early Steps Program Administrator, Part C Coordinator

Alexandra Goldberg, Help Me Grow FL and LTSAE Ambassador to FL

Jennifer Kaufman, Chief Family Health Systems, Part C Coordinator

Rebecca Collins-Hughes, LTSAE Ambassador to RI, Paul V. Sherlock Center, RI College



OSEP

Office of Special Education Programs

Brenda Wilkins
OSEP Monitoring and
State Improvement Planning Division





OSEP

Office of Special Education Programs

Child Find Self-Assessment (CFSA)

- Voluntary self-assessment tool to support Part C programs
- Collaborative effort with ECTA, IDC and DaSy





OSEP

Office of Special Education Programs

Why Focus on Child Find?





OSEP

Office of Special Education Programs

How is the CFSA Organized?

- ✓ Statutory requirements specific to Part C
 - Highlights the specific requirements all States must have for a Comprehensive Child Find System.
- ✓ Child Find Best Practices.
 - Evaluates and tracks how a State identifies and implements child find best practices.
 - Assist States in identifying evidence-based practices to support their Child Find efforts.
 - Child Find special populations.
- ✓ Technical Assistance and Resources.
 - Provides an overview of OSEP funded resources and technical assistance centers that are committed to improving State early intervention and early childhood special education service systems





OSEP

Office of Special Education Programs

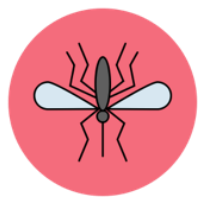
Child Find Special Populations



Children who have been maltreated



Children with opioid or other substance exposure



¹

Children exposed to Zika infection



¹ Designed by Icon Pond from Flaticon





OSEP

Office of Special Education Programs

Section I

- Fillable PDF
- Highlights requirements
- Includes:
 - Referral procedures
 - Timeline
 - Screening procedures (optional)





OSEP

Office of Special Education Programs

Section II Table of Contents

Table of Contents

Instructions

Child Find Best Practices

Collaboration with primary referral sources

Identification of infants and toddlers who are underserved by Part C

Data Systems

Evaluation of Child Find

Technical Adequacy of Screening and Evaluation Tools

Efficiency of Screening, Referral, and Evaluation Process and Procedures

Responding to Children Found Ineligible for Early Intervention

Theme Summary

Summary ratings for each Best Practice

Action Plan

Child Find Action Plan (roster of team members, activities, etc)

Data

Exportable data file updated via "Get Data" button (*see Instructions tab for more information*)



Get Data





OSEP

Office of Special Education Programs

Section II Data Summary of Child Find Best Practices

THEME SUMMARY	Table of Contents							Total # of Practices	# of Practices in this theme				# of Practices in this theme				
	Rating	Priority	Theme Rating							with RATING...				with PRIORITY...			
			1	2	3	4	5		6	7	1	2	3	4	Low	Medium	High
Child Find Best Practices																	
Collaboration with Primary Referral sources	7	H								6				6		3	3
Identification of infants and toddlers who are underserved by Part C	6	L								3			1	2	3		
Data Systems	5	H								5			3	2	3		2
Evaluation of Child Find	4	M								4		2	1	1		4	
Technical Adequacy of Screening and Evaluation Tools	3	H								6	3		2	1	1		5
Efficiency of Screening, Referral, and Evaluation Process and Procedures	2	H								9	7	1		1	1		8
Responding to Children Found Ineligible for Early Intervention	1	M								4	4					4	





OSEP

Office of Special Education Programs

Section II Child Find Best Practices

Child Find Best Practices

Best Practice Theme Rating (Calculated)

1	None of the practices are yet planned or in place.
2	Most of the practices are not yet planned or in place.
3	Some practices are in place; a few may be fully implemented.
4	At least half of the practices are in place; a few may be fully implemented.
5	At least half of the practices are in place; some are fully implemented.
6	At least half of the practices are fully implemented; the rest are partially implemented.
7	All practices are fully implemented.

[Table of Contents](#)

BP 1 BP 2 BP 3 BP 4 BP 5 BP 6 BP 7

Best Practice Rating (BPR)

1	No - practice not in place <u>and</u> not planning to work on it at this time
2	No - practice not in place <u>but</u> planning to work on it or getting started
3	Yes - practice partially implemented
4	Yes - practice fully implemented

[Show Evidence](#)

[Hide Evidence](#)

a	The state has a method for evaluating progress towards best practices, including experiences of parents and primary referral sources. <u>Evidence:</u>
b	The Part C state data system, directly or through a related application, has reporting and analysis tools that provide end users, including state and local program staff, with easy access* to the data in both raw form and reports. <u>Evidence:</u>
c	Reports include metrics useful for monitoring the child find system. <u>Evidence:</u>
d	Data system features methods for identifying underserved populations. <u>Evidence:</u>

Rating		PRIORITY
Best Practice Rating:	4	M
Best Practice Rating:	2	M
Best Practice Rating:	2	M
Best Practice Rating:	3	M





OSEP

Office of Special Education Programs

Section II Child Find Action Plan

B	C	E	F	G	H	I	J	K	L
Child Find Action Plan									
Planning Team Members									
Child Find Improvement Plan									
Stakeholder Involvement									
Instructions:		Planning Team Members State Child Find Planning Team Members, Role and Organization Represented			Child Find Improvement Plan				
		Child Find Planning Team Member	Role	Organization	Outcomes of activities	Activities to improve Child Find	Resources Needed (fiscal, partners, personnel, materials)	Who Is Responsible	Timeline
Fill out the charts to the right.		1							
The links above to jump to a section.		2							
		3							
		4							
		5							
		6							
		7							
		8							

NOTE ON PRINTING: If you would like to print, this page is set up to print each chart on its own page, going across. You will want to print only the pages that have data in them - if you print this whole tab you may end up with many pages with no information.





OSEP

Office of Special Education Programs

Compendium of Screening Measures



- First line screening instruments for children, birth to 5 years
- Pertinent information includes cost, administration time, quality level, training required, and age range covered
- Reference for early care and education providers, pediatricians, home visitors, child welfare case workers, mental health professionals, early intervention specialists, and various others





OSEP

Office of Special Education Programs

ED and HHS's Developmental Screening Resources

- Compendium of Screening Measures
- Guides on how to use the screeners for a variety of audiences
- Toolkits with resources and tip sheets
- Screening passport that allows families to track a child's screening history and results
- Community Guide -- Broad Community Goals and Strategies for Successful Developmental and Behavioral Screening Initiatives and Community Examples
- <https://www.acf.hhs.gov/ecd/child-health-development/watch-me-thrive>

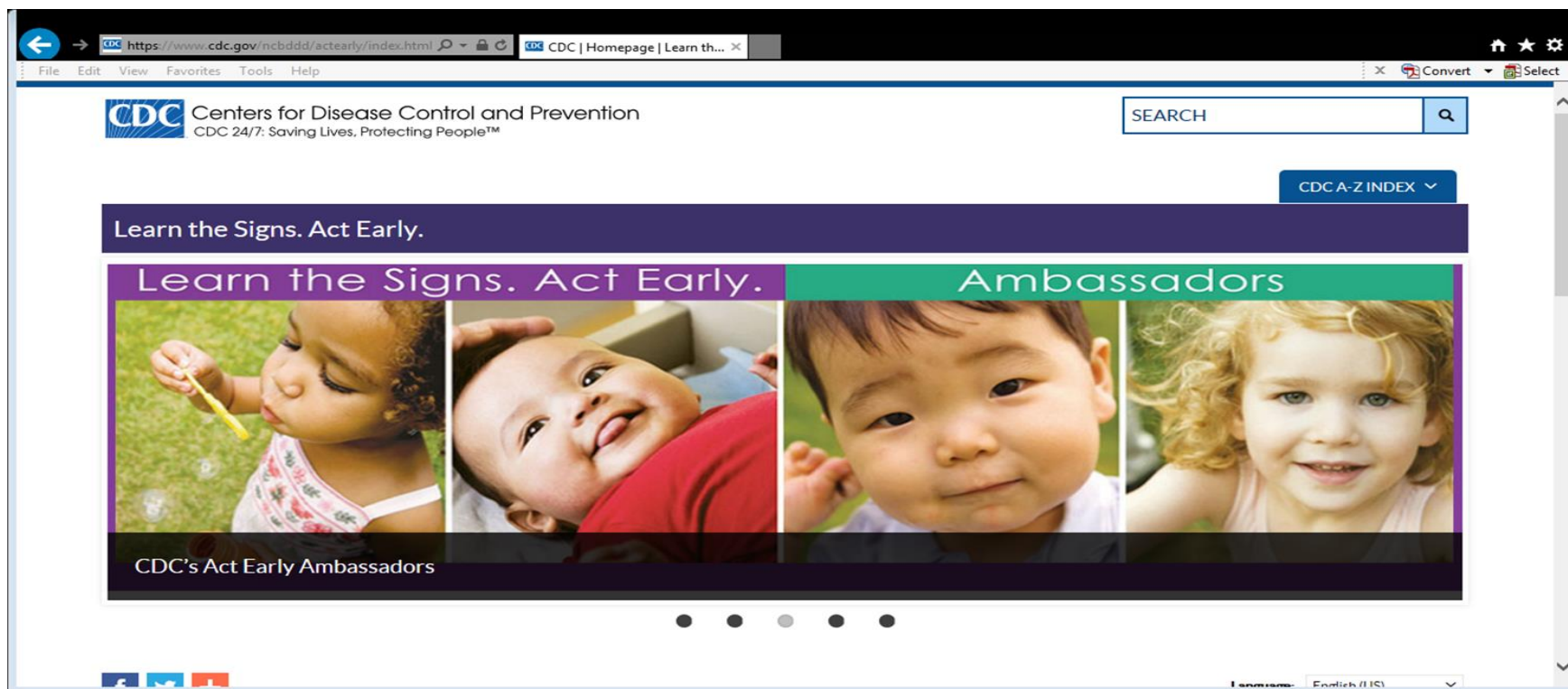




OSEP

Office of Special Education Programs

Developmental Screening Resources





OSEP

Office of Special Education Programs

Developmental Screening Resources

- Division of Early Childhood Practice Guides and Performance Checklists on Assessment
- DEC Assessment Performance Checklists:
<http://ectacenter.org/decrp/type-checklists.asp>
- Practitioner Practice Guides:
<http://ectacenter.org/decrp/type-pgpractitioner.asp>
- Family Practice Guides: <http://ectacenter.org/decrp/type-pgfamily.asp>
- Informed Clinical Reasoning Illustration:
<http://ectacenter.org/decrp/type-illustrations.asp>

