

## State X Family Outcomes Data - C4

### Background

- State X is a moderately populated state that served approximately 7,000 Part C eligible children on December 1, 2009.
- There are 10 regional early intervention programs statewide.
- Annually in September, the state sends surveys directly to families with active eligible children as of June 30<sup>th</sup>. Families who have indicated their primary language is Spanish receive the survey in Spanish.
- This year, the state mailed 6,715 surveys to families in the program. A total of 2,153 surveys were returned (32%). Return rates varied by region but were all at or above 25%.
- Analyses show that data are representative by race/ethnicity, gender, geographic location, and disability category.
- The state has 2 major metropolitan areas (served by regions 2 and 7), Five (5) regions serve a mixture of urban and rural areas (regions 4, 5, 8, 9 and 10), and three (3) regions (regions 1, 3, and 6) serve primarily rural areas.

### State Data

FFY 2009 (July 1, 2008 to June 30, 2009) family outcomes data from the statewide family survey is presented in Table 1. In addition, trend data for the last 3 years is presented.

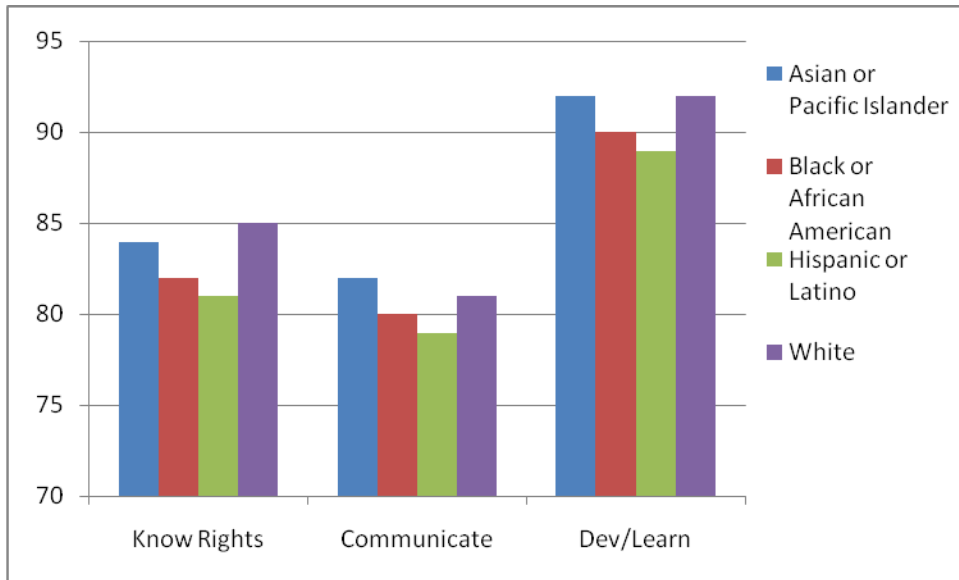
**Table 1: Trend for Statewide Family Outcomes Data**

Family Outcome	FFY06	FFY07	FFY08
A. Percent of families participating in Part C who report that the early intervention services have helped the family know their rights.	82%	83%	84%
B. Percent of families participating in Part C who report that the early intervention services have helped the family effectively communicate their children's needs.	80%	81%	81%
C. Percent of families participating in Part C who report that the early intervention services have helped the family help their children develop and learn.	90%	90%	91%

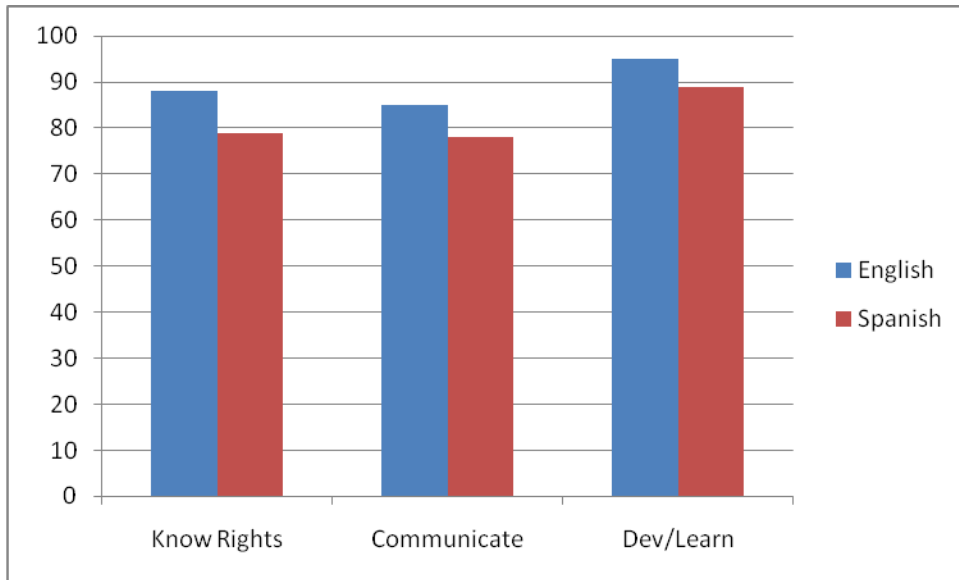
1. Given the FFY2008 data and the trend data, what conclusions can you draw about your Part C performance?
  
2. What other ways would you want to analyze your data in order to better understand how the Part C program is performing and to identify areas for improvement?

Additional analysis of the statewide family outcomes data by family race/ethnicity and survey language are presented in Figure 1 and 2 below.

**Figure 1: Statewide Family Outcomes Data by Race/Ethnicity**



**Figure 2: Statewide Family Outcomes Data by Survey Language**

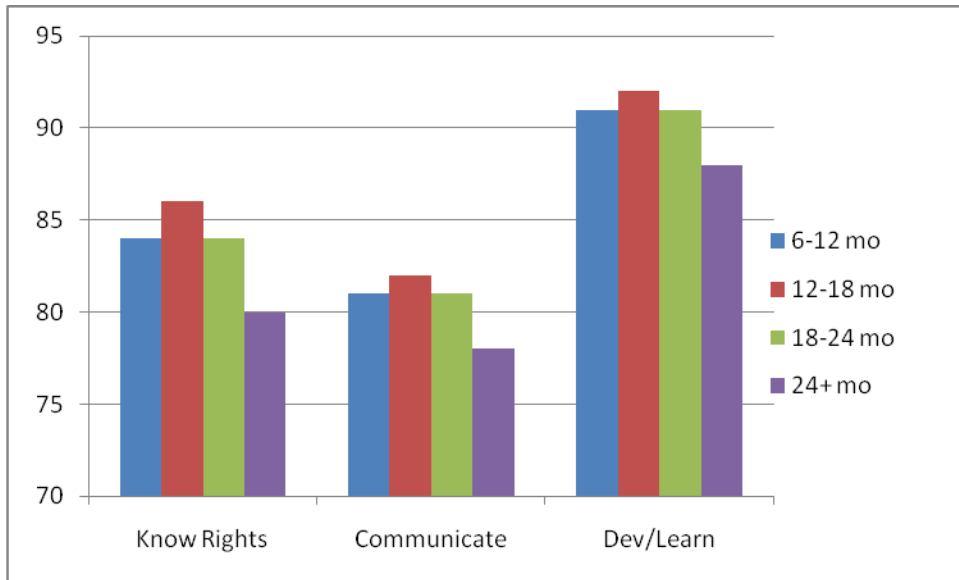


3. What kinds of conclusions might you draw from the race/ethnicity and survey language data?

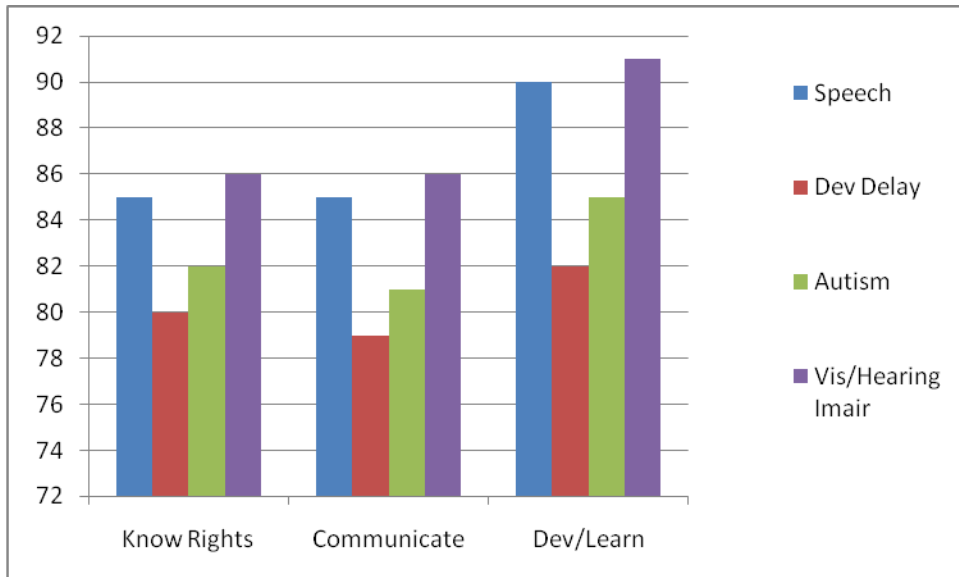
4. What additional analysis might you conduct to investigate further?

Additional analysis of the statewide family outcomes data by length of time in service and child's disability are presented in Figure 3 and 4 below.

**Figure 3: Statewide Family Outcomes Data by Length of Time in Service**



**Figure 4: Statewide Family Outcomes Data by Child's Disability Category**

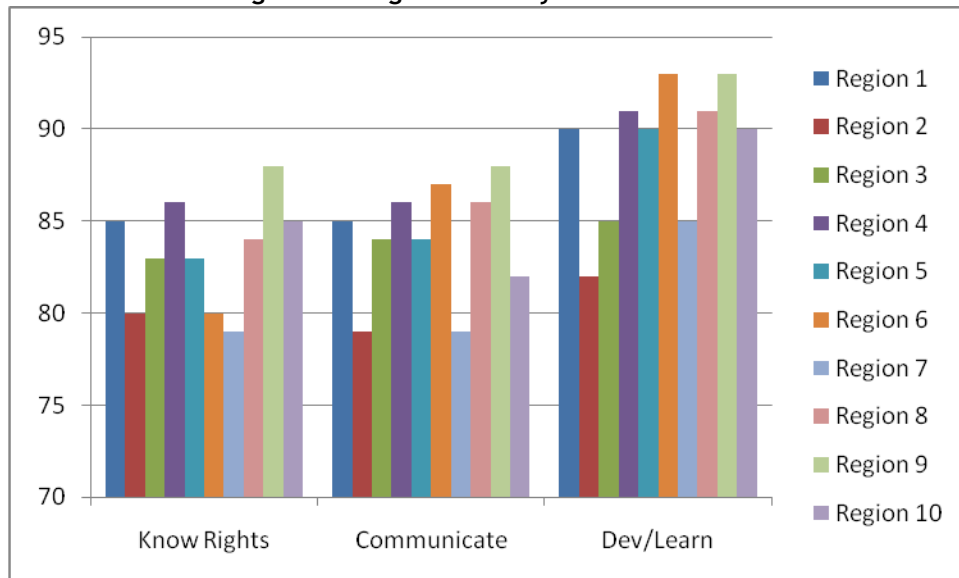


5. What kinds of conclusions might you draw from the length of time in service and disability category data?
  
6. What additional analysis might you conduct to investigate further?

## Regional Program Data

Figure 5 summarizes each regional program's performance on the three family outcomes. The state has gathered additional information about local programs, presented in Table 2 below, to try to better understand program issues and how they might relate to the family outcomes data. As stated earlier, the state has two major metropolitan areas (served by regions 2 and 7), five regions serve a mixture of urban and rural areas (regions 4, 5, 8, 9 and 10), and three regions (regions 1, 3, and 6) serve primarily rural areas.

**Figure 5: Regional Family Outcomes Data**



**Table 2: Local Data**

Local Data	Local Program									
	1	2	3	4	5	6	7	8	9	10
Child/Family did not have services begin 30 days from the date the IFSP was signed		X					X			
Translation/Interpretation services are not easily accessible		X	X			X				
IFSP review did not show clear link between families' concerns and priorities and IFSP goals		X					X			
Parent leadership programs are available for families with the support of the PTI	X			X					X	
Staff turnover has been an issue			X				X			
The Family Rights booklet is not translated into languages other than English or Spanish		X				X	X			

- Given the local data, what conclusions can you draw about the local program performance on the family outcomes?
- What other data would you want to explore to understand why some local programs are performing better or worse than others?

Using all of the data presented in this scenario, including the regional program data:

9. What issues need to be addressed with regional programs only?

10. What are the statewide issues that the state needs to address to improve family outcomes?

11. What new improvement activities might be included in State X's SPP?